

PTMS Antibody (C-term)

Affinity Purified Rabbit Polyclonal Antibody (Pab)

Catalog # AP9279b

Product Information

Application	WB, IHC-P, FC, E
Primary Accession	P20962
Reactivity	Human
Host	Rabbit
Clonality	Polyclonal
Isotype	Rabbit IgG
Clone Names	RB23249
Calculated MW	11530
Antigen Region	57-85

Additional Information

Gene ID	5763
Other Names	Parathymosin, PTMS
Target/Specificity	This PTMS antibody is generated from rabbits immunized with a KLH conjugated synthetic peptide between 57-85 amino acids from the C-terminal region of human PTMS.
Dilution	WB~~1:1000 IHC-P~~1:100~500 FC~~1:10~50 E~~Use at an assay dependent concentration.
Format	Purified polyclonal antibody supplied in PBS with 0.09% (W/V) sodium azide. This antibody is purified through a protein A column, followed by peptide affinity purification.
Storage	Maintain refrigerated at 2-8°C for up to 2 weeks. For long term storage store at -20°C in small aliquots to prevent freeze-thaw cycles.
Precautions	PTMS Antibody (C-term) is for research use only and not for use in diagnostic or therapeutic procedures.

Protein Information

Name	PTMS
Function	Parathymosin may mediate immune function by blocking the effect of prothymosin alpha which confers resistance to certain opportunistic infections.

Background

PTMS may mediate immune function by blocking the effect of prothymosin alpha which confers resistance to certain opportunistic infections.

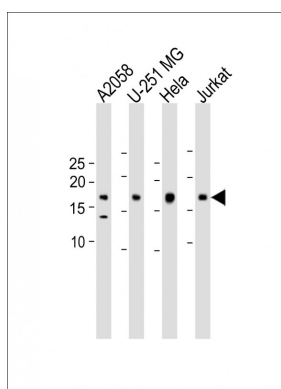
References

Hosgood,H.D. et.al., Occup Environ Med 66 (12), 848-853 (2009)

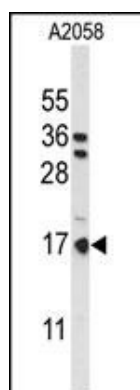
Chapuis,J., et.al., Mol. Psychiatry 14 (11), 1004-1016 (2009)

Martic,G., et.al., J. Biol. Chem. 280 (16), 16143-16150 (2005)

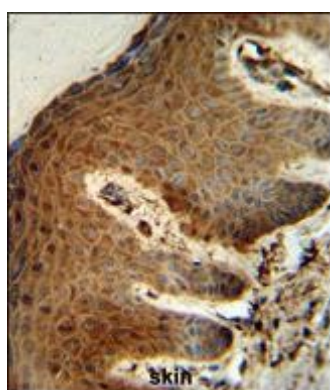
Images



All lanes: Anti-PTMS Antibody (C-term) at 1:2000 dilution
Lane 1: A2058 whole cell lysate Lane 2: U-251 MG whole cell lysate Lane 3: HeLa whole cell lysate Lane 4: Jurkat whole cell lysate Lysates/proteins at 20 µg per lane.
Secondary: Goat Anti-Rabbit IgG, (H+L), Peroxidase conjugated (ASP1615) at 1/15000 dilution. Observed band size: 18 KDa Blocking/Dilution buffer: 5% NFDM/TBST.

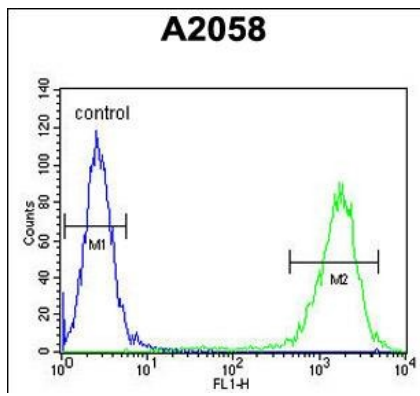


Western blot analysis of PTMS Antibody (C-term) (Cat. #AP9279b) in A2058 cell line lysates (35ug/lane). PTMS (arrow) was detected using the purified Pab.



PTMS Antibody (C-term) (Cat. #AP9279b) IHC analysis in formalin fixed and paraffin embedded human skin followed by peroxidase conjugation of the secondary antibody and DAB staining. This data demonstrates the use of the PTMS Antibody (C-term) for immunohistochemistry. Clinical relevance has not been evaluated.

PTMS Antibody (C-term) (Cat. #AP9279b) flow cytometric analysis of A2058 cells (right histogram) compared to a negative control cell (left histogram).FITC-conjugated goat-anti-rabbit secondary antibodies were used for the analysis.



Please note: All products are 'FOR RESEARCH USE ONLY. NOT FOR USE IN DIAGNOSTIC OR THERAPEUTIC PROCEDURES'.