

TOE1 Antibody

Rabbit mAb

Catalog # AP92803

Product Information

Application	WB
Primary Accession	Q96GM8
Reactivity	Human
Clonality	Monoclonal
Other Names	Toe1;
Isotype	Rabbit IgG
Host	Rabbit
Calculated MW	56548

Additional Information

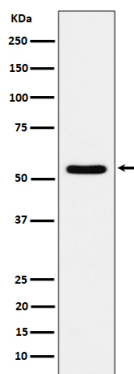
Dilution	WB 1:500~1:2000
Purification	Affinity-chromatography
Immunogen	A synthesized peptide derived from human TOE1
Description	Inhibits cell growth rate and cell cycle. Induces CDKN1A expression as well as TGF-beta expression. Mediates the inhibitory growth effect of EGR1.
Storage Condition and Buffer	Rabbit IgG in phosphate buffered saline , pH 7.4, 150mM NaCl, 0.02% sodium azide and 50% glycerol. Store at +4°C short term. Store at -20°C long term. Avoid freeze / thaw cycle.

Protein Information

Name	TOE1
Function	Inhibits cell growth rate and cell cycle. Induces CDKN1A expression as well as TGF-beta expression. Mediates the inhibitory growth effect of EGR1. Involved in the maturation of snRNAs and snRNA 3'-tail processing (PubMed: 28092684).
Cellular Location	Nucleus, nucleolus. Nucleus speckle. Note=Localizes to nuclear speckles
Tissue Location	Widely expressed..

Images

Western blot analysis of TOE1 expression in 293T cell lysate.



Please note: All products are 'FOR RESEARCH USE ONLY. NOT FOR USE IN DIAGNOSTIC OR THERAPEUTIC PROCEDURES'.