

# P2Y12 Antibody

Rabbit mAb

Catalog # AP92821

## Product Information

|                          |  |
|--------------------------|--|
| <b>Application</b>       | WB, IP   |
| <b>Primary Accession</b> | <a href="#">Q9H244</a>   |
| <b>Reactivity</b>        | Rat, Human, Mouse  |
| <b>Clonality</b>         | Monoclonal   |
| <b>Other Names</b>       | ADP glucose receptor; ADPGR; BDPLT8; HORK3; P2RY12; P2Y purinoceptor 12; P2Y12; P2Y12 platelet ADP receptor; Platelet ADP receptor; Purinergic receptor P2RY12; Purinergic receptor P2Y12; SP1999; |
| <b>Isotype</b>           | Rabbit IgG   |
| <b>Host</b>              | Rabbit   |
| <b>Calculated MW</b>     | 39439  |

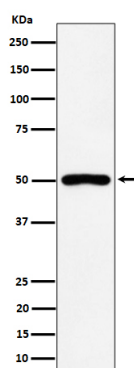
## Additional Information

|                                     |   |
|-------------------------------------|---|
| <b>Dilution</b>                     | WB 1:500~1:2000 IP 1:50   |
| <b>Purification</b>                 | Affinity-chromatography   |
| <b>Immunogen</b>                    | A synthesized peptide derived from human P2Y12  |
| <b>Description</b>                  | Receptor for ADP and ATP coupled to G-proteins that inhibit the adenylyl cyclase second messenger system. Not activated by UDP and UTP. Involved in platelets aggregation.        |
| <b>Storage Condition and Buffer</b> | Rabbit IgG in phosphate buffered saline , pH 7.4, 150mM NaCl, 0.02% sodium azide and 50% glycerol. Store at +4°C short term. Store at -20°C long term. Avoid freeze / thaw cycle. |

## Protein Information

|                          |   |
|--------------------------|---|
| <b>Name</b>              | P2RY12  |
| <b>Synonyms</b>          | HORK3   |
| <b>Function</b>          | Receptor for ADP and ATP coupled to G-proteins that inhibit the adenylyl cyclase second messenger system. Not activated by UDP and UTP. Required for normal platelet aggregation and blood coagulation. |
| <b>Cellular Location</b> | Cell membrane; Multi-pass membrane protein  |
| <b>Tissue Location</b>   | Highly expressed in the platelets, lower levels in the brain. Lowest levels in the lung, appendix, pituitary and adrenal gland. Expressed in the spinal cord and in the fetal brain                     |

## Images



Western blot analysis of P2Y12 expression in RAW 264.7 cell lysate.

Please note: All products are 'FOR RESEARCH USE ONLY. NOT FOR USE IN DIAGNOSTIC OR THERAPEUTIC PROCEDURES'.