

# GCLM Antibody

Rabbit mAb

Catalog # AP92839

## Product Information

---

<b>Application</b>	WB, IHC, IP
<b>Primary Accession</b>	<a href="#">P48507</a>
<b>Reactivity</b>	Rat, Human, Mouse
<b>Clonality</b>	Monoclonal
<b>Other Names</b>	GCLM; GCS light chain; GLCLR;
<b>Isotype</b>	Rabbit IgG
<b>Host</b>	Rabbit
<b>Calculated MW</b>	30727

## Additional Information

---

<b>Dilution</b>	WB 1:500~1:2000 IHC 1:50~1:200 IP 1:50
<b>Purification</b>	Affinity-chromatography
<b>Immunogen</b>	A synthesized peptide derived from human GCLM
<b>Description</b>	This protein is involved in step 1 of the subpathway that synthesizes glutathione from L-cysteine and L-glutamate. This subpathway is part of the pathway glutathione biosynthesis, which is itself part of Sulfur metabolism.
<b>Storage Condition and Buffer</b>	Rabbit IgG in phosphate buffered saline , pH 7.4, 150mM NaCl, 0.02% sodium azide and 50% glycerol. Store at +4°C short term. Store at -20°C long term. Avoid freeze / thaw cycle.

## Protein Information

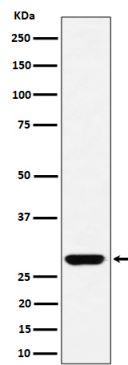
---

<b>Name</b>	GCLM
<b>Synonyms</b>	GLCLR
<b>Tissue Location</b>	In all tissues examined. Highest levels in skeletal muscle

## Images

---

Western blot analysis of GCLM expression in HeLa cell lysate.



Please note: All products are 'FOR RESEARCH USE ONLY. NOT FOR USE IN DIAGNOSTIC OR THERAPEUTIC PROCEDURES'.