

# Epsin 1 Antibody

Rabbit mAb

Catalog # AP92843

## Product Information

<b>Application</b>	WB, IF, ICC
<b>Primary Accession</b>	<a href="#">Q9Y6I3</a>
<b>Reactivity</b>	Rat, Human, Mouse
<b>Clonality</b>	Monoclonal
<b>Other Names</b>	EH domain binding mitotic phosphoprotein; Epn1 ;EPS 15 interacting protein 1; Epsin 1;
<b>Isotype</b>	Rabbit IgG
<b>Host</b>	Rabbit
<b>Calculated MW</b>	60293

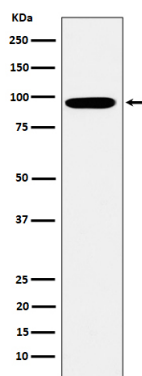
## Additional Information

<b>Dilution</b>	WB 1:500~1:2000 ICC/IF 1:50~1:200
<b>Purification</b>	Affinity-chromatography
<b>Immunogen</b>	A synthesized peptide derived from human Epsin 1
<b>Description</b>	Binds to membranes enriched in phosphatidylinositol 4,5-bisphosphate (PtdIns(4,5)P <sub>2</sub> ). Modifies membrane curvature and facilitates the formation of clathrin-coated invaginations (By similarity). Regulates receptor-mediated endocytosis.
<b>Storage Condition and Buffer</b>	Rabbit IgG in phosphate buffered saline , pH 7.4, 150mM NaCl, 0.02% sodium azide and 50% glycerol. Store at +4°C short term. Store at -20°C long term. Avoid freeze / thaw cycle.

## Protein Information

<b>Name</b>	EPN1
<b>Function</b>	Binds to membranes enriched in phosphatidylinositol 4,5- bisphosphate (PtdIns(4,5)P <sub>2</sub> ). Modifies membrane curvature and facilitates the formation of clathrin-coated invaginations (By similarity). Regulates receptor-mediated endocytosis (PubMed: <a href="#">10393179</a> , PubMed: <a href="#">10557078</a> ).
<b>Cellular Location</b>	Cytoplasm. Cell membrane; Peripheral membrane protein. Nucleus. Membrane, clathrin-coated pit Note=Associated with the cytoplasmic membrane at sites where clathrin- coated pits are forming. Colocalizes with clathrin and AP-2 in a punctate pattern on the plasma membrane. Detected in presynaptic nerve terminals and in Golgi stacks. May shuttle to the nucleus when associated with ZBTB16/ZNF145 (By similarity).

## Images



Western blot analysis of Epsin 1 expression in K562 cell lysate.

Please note: All products are 'FOR RESEARCH USE ONLY. NOT FOR USE IN DIAGNOSTIC OR THERAPEUTIC PROCEDURES'.