

GFPT1 Antibody

Rabbit mAb

Catalog # AP92844

Product Information

Application	WB, IHC, IP
Primary Accession	Q06210
Reactivity	Rat, Human, Mouse
Clonality	Monoclonal
Other Names	CMS12; CMSTA1; GFA; GFAT; GFAT1; GFAT1m; GFPT; Gfpt1; GFPT1L; Glucosamine--fructose-6-phosphate aminotransferase [isomerizing] 1; Hexosephosphate aminotransferase 1;
Isotype	Rabbit IgG
Host	Rabbit
Calculated MW	78806

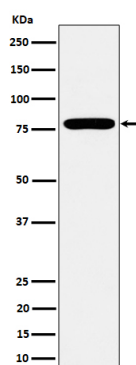
Additional Information

Dilution	WB 1:500~1:2000 IHC 1:50~1:200 IP 1:50
Purification	Affinity-chromatography
Immunogen	A synthesized peptide derived from human GFPT1
Description	Controls the flux of glucose into the hexosamine pathway. Most likely involved in regulating the availability of precursors for N- and O-linked glycosylation of proteins.
Storage Condition and Buffer	Rabbit IgG in phosphate buffered saline , pH 7.4, 150mM NaCl, 0.02% sodium azide and 50% glycerol. Store at +4°C short term. Store at -20°C long term. Avoid freeze / thaw cycle.

Protein Information

Name	GFPT1
Synonyms	GFAT, GFPT
Function	Controls the flux of glucose into the hexosamine pathway. Most likely involved in regulating the availability of precursors for N- and O-linked glycosylation of proteins. Regulates the circadian expression of clock genes BMAL1 and CRY1 (By similarity). Has a role in fine tuning the metabolic fluctuations of cytosolic UDP-GlcNAc and its effects on hyaluronan synthesis that occur during tissue remodeling (PubMed: 26887390).
Tissue Location	Isoform 1 is predominantly expressed in skeletal muscle. Not expressed in brain. Seems to be selectively expressed in striated muscle.

Images



Western blot analysis of GFPT1 expression in MCF7 cell lysate.

Please note: All products are 'FOR RESEARCH USE ONLY. NOT FOR USE IN DIAGNOSTIC OR THERAPEUTIC PROCEDURES'.