

MEF2A Antibody

Rabbit mAb

Catalog # AP92848

Product Information

Application	WB, IF, ICC
Primary Accession	Q02078
Reactivity	Rat, Human, Mouse
Clonality	Monoclonal
Other Names	ADCAD1; MEF2; MEF2A; Myocyte enhancer factor 2A; RSRFC4; RSRFC9; Serum response factor like protein 1;
Isotype	Rabbit IgG
Host	Rabbit
Calculated MW	54811

Additional Information

Dilution	WB 1:500~1:2000 ICC/IF 1:50~1:200
Purification	Affinity-chromatography
Immunogen	A synthesized peptide derived from human MEF2A
Description	Involved in the activation of numerous growth factor- and stress-induced genes. Mediates cellular functions not only in skeletal and cardiac muscle development, but also in neuronal differentiation and survival. Plays diverse roles in the control of cell growth, survival and apoptosis via p38 MAPK signaling in muscle-specific and/or growth factor-related transcription.
Storage Condition and Buffer	Rabbit IgG in phosphate buffered saline , pH 7.4, 150mM NaCl, 0.02% sodium azide and 50% glycerol. Store at +4°C short term. Store at -20°C long term. Avoid freeze / thaw cycle.

Protein Information

Name	MEF2A
Synonyms	MEF2
Function	Transcriptional activator which binds specifically to the MEF2 element, 5'-YTA[AT](4)TAR-3', found in numerous muscle-specific genes. Also involved in the activation of numerous growth factor- and stress-induced genes. Mediates cellular functions not only in skeletal and cardiac muscle development, but also in neuronal differentiation and survival. Plays diverse roles in the control of cell growth, survival and apoptosis via p38 MAPK signaling in muscle-specific and/or growth factor-related transcription. In cerebellar granule neurons, phosphorylated and sumoylated MEF2A represses transcription of NUR77 promoting synaptic differentiation. Associates with chromatin to the ZNF16 promoter.

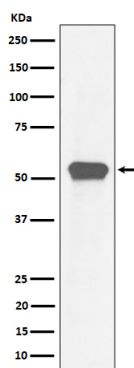
Cellular Location

Nucleus {ECO:0000255 | PROSITE-ProRule:PRU00251,
ECO:0000269 | PubMed:12691662, ECO:0000269 | PubMed:16563226}

Tissue Location

Isoform MEF2 and isoform MEFA are expressed only in skeletal and cardiac muscle and in the brain. Isoform RSRFC4 and isoform RSRFC9 are expressed in all tissues examined

Images



Western blot analysis of MEF2A expression in HeLa cell lysate.

Please note: All products are 'FOR RESEARCH USE ONLY. NOT FOR USE IN DIAGNOSTIC OR THERAPEUTIC PROCEDURES'.