

GRK6 Antibody

Rabbit mAb

Catalog # AP92851

Product Information

Application	WB
Primary Accession	P43250
Reactivity	Human, Mouse
Clonality	Monoclonal
Other Names	G protein coupled receptor kinase 6; G protein coupled receptor kinase GRK6; G protein-coupled receptor kinase 6; Gprk6; Grk6;
Isotype	Rabbit IgG
Host	Rabbit
Calculated MW	65991

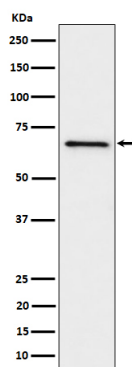
Additional Information

Dilution	WB 1:500~1:2000
Purification	Affinity-chromatography
Immunogen	A synthesized peptide derived from human GRK6
Description	Specifically phosphorylates the activated forms of G protein-coupled receptors.
Storage Condition and Buffer	Rabbit IgG in phosphate buffered saline , pH 7.4, 150mM NaCl, 0.02% sodium azide and 50% glycerol. Store at +4°C short term. Store at -20°C long term. Avoid freeze / thaw cycle.

Protein Information

Name	GRK6
Synonyms	GPRK6
Function	Specifically phosphorylates the activated forms of G protein- coupled receptors. Such receptor phosphorylation initiates beta- arrestin-mediated receptor desensitization, internalization, and signaling events leading to their desensitization. Seems to be involved in the desensitization of D2-like dopamine receptors in striatum and chemokine receptor CXCR4 which is critical for CXCL12-induced cell chemotaxis (By similarity). Phosphorylates rhodopsin (RHO) (in vitro) and a non G-protein-coupled receptor: LRP6 during Wnt signaling (in vitro).
Cellular Location	Membrane; Lipid-anchor.
Tissue Location	Widely expressed..

Images



Western blot analysis of GRK6 expression in Ramos cell lysate.

Please note: All products are 'FOR RESEARCH USE ONLY. NOT FOR USE IN DIAGNOSTIC OR THERAPEUTIC PROCEDURES'.