

ENDOGL1 / ENGL Antibody

Rabbit mAb

Catalog # AP92857

Product Information

Application	WB, IP
Primary Accession	Q9Y2C4
Reactivity	Human
Clonality	Monoclonal
Other Names	Endo G like 1; ENDOGL1; ENDOGL2; Endonuclease G like 1; Endonuclease G like 2; ENGL; ENGLA; ENGLB; Exog; Nuclease EXOG;
Isotype	Rabbit IgG
Host	Rabbit
Calculated MW	41085

Additional Information

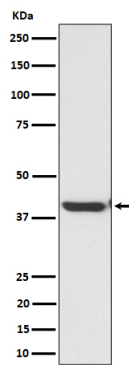
Dilution	WB 1:500~1:2000 IP 1:50
Purification	Affinity-chromatography
Immunogen	A synthesized peptide derived from human ENDOGL1 / ENGL
Description	Endo/exonuclease with nicking activity towards supercoiled DNA, a preference for single stranded DNA and 5'-3' exonuclease activity.
Storage Condition and Buffer	Rabbit IgG in phosphate buffered saline , pH 7.4, 150mM NaCl, 0.02% sodium azide and 50% glycerol. Store at +4°C short term. Store at -20°C long term. Avoid freeze / thaw cycle.

Protein Information

Name	EXOG
Synonyms	ENDOGL1, ENDOGL2, ENGL
Function	Endo/exonuclease with nicking activity towards supercoiled DNA, a preference for single-stranded DNA and 5'-3' exonuclease activity.
Cellular Location	Mitochondrion inner membrane
Tissue Location	Ubiquitous.

Images

Western blot analysis of ENDOGL1 / ENGL expression in HepG2 cell lysate.



Please note: All products are 'FOR RESEARCH USE ONLY. NOT FOR USE IN DIAGNOSTIC OR THERAPEUTIC PROCEDURES'.