

RAB5C / RABL Antibody

Rabbit mAb

Catalog # AP92859

Product Information

Application	WB, IHC, IF, ICC, IHF
Primary Accession	P51148
Reactivity	Rat, Human, Mouse
Clonality	Monoclonal
Other Names	L1880; RAB5C; RAB5C, member of RAS oncogene family; RAB5CL; RAB5L; RABL; Ras-related protein Rab-5C;
Isotype	Rabbit IgG
Host	Rabbit
Calculated MW	23483

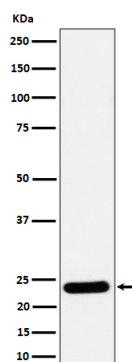
Additional Information

Dilution	WB 1:500~1:2000 IHC 1:50~1:200 ICC/IF 1:50~1:200
Purification	Affinity-chromatography
Immunogen	A synthesized peptide derived from human RAB5C / RABL
Description	Protein transport. Probably involved in vesicular traffic.
Storage Condition and Buffer	Rabbit IgG in phosphate buffered saline , pH 7.4, 150mM NaCl, 0.02% sodium azide and 50% glycerol. Store at +4°C short term. Store at -20°C long term. Avoid freeze / thaw cycle.

Protein Information

Name	RAB5C (HGNC:9785)
Synonyms	RABL
Function	The small GTPases Rab are key regulators of intracellular membrane trafficking, from the formation of transport vesicles to their fusion with membranes. Rabs cycle between an inactive GDP-bound form and an active GTP-bound form that is able to recruit to membranes different sets of downstream effectors directly responsible for vesicle formation, movement, tethering and fusion.
Cellular Location	Cell membrane {ECO:0000250 UniProtKB:P20339}; Lipid-anchor {ECO:0000250 UniProtKB:P20339}; Cytoplasmic side {ECO:0000250 UniProtKB:P20339}. Early endosome membrane {ECO:0000250 UniProtKB:P20339}; Lipid-anchor {ECO:0000250 UniProtKB:P20339}. Melanosome. Note=Identified by mass spectrometry in melanosome fractions from stage I to stage IV

Images



Western blot analysis of RAB5C / RABL expression in 293 cell lysate.

Please note: All products are 'FOR RESEARCH USE ONLY. NOT FOR USE IN DIAGNOSTIC OR THERAPEUTIC PROCEDURES'.