

Cystatin B Antibody

Rabbit mAb

Catalog # AP92863

Product Information

Application	WB, IHC
Primary Accession	P04080
Reactivity	Rat, Human
Clonality	Monoclonal
Other Names	CHROW21; CST6; CSTB; Cystatin B (stefin B); CYTB EPM1; EPM1A; PME; STFB; ULD;
Isotype	Rabbit IgG
Host	Rabbit
Calculated MW	11140

Additional Information

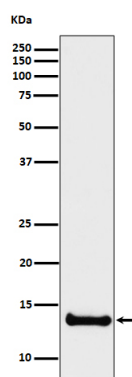
Dilution	WB 1:500~1:2000 IHC 1:50~1:200
Purification	Affinity-chromatography
Immunogen	A synthesized peptide derived from human Cystatin B
Description	This is an intracellular thiol proteinase inhibitor. Tightly binding reversible inhibitor of cathepsins L, H and B.
Storage Condition and Buffer	Rabbit IgG in phosphate buffered saline , pH 7.4, 150mM NaCl, 0.02% sodium azide and 50% glycerol. Store at +4°C short term. Store at -20°C long term. Avoid freeze / thaw cycle.

Protein Information

Name	CSTB
Synonyms	CST6, STFB
Function	This is an intracellular thiol proteinase inhibitor. Tightly binding reversible inhibitor of cathepsins L, H and B.
Cellular Location	Cytoplasm. Nucleus

Images

Western blot analysis of Cystatin B expression in U87-MG cell lysate.



Please note: All products are 'FOR RESEARCH USE ONLY. NOT FOR USE IN DIAGNOSTIC OR THERAPEUTIC PROCEDURES'.