

FRAT1 Antibody

Rabbit mAb

Catalog # AP92872

Product Information

Application	WB, IF, ICC
Primary Accession	Q92837
Reactivity	Rat, Human, Mouse
Clonality	Monoclonal
Other Names	FRAT 1;

Isotype	Rabbit IgG
Host	Rabbit
Calculated MW	29093

Additional Information

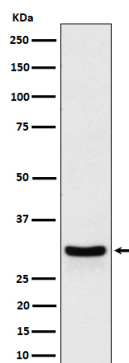
Dilution	WB 1:500~1:2000 ICC/IF 1:50~1:200
Purification	Affinity-chromatography
Immunogen	A synthesized peptide derived from human FRAT1
Description	Positively regulates the Wnt signaling pathway by stabilizing beta-catenin through the association with GSK-3. May play a role in tumor progression and collaborate with PIM1 and MYC in lymphomagenesis.
Storage Condition and Buffer	Rabbit IgG in phosphate buffered saline , pH 7.4, 150mM NaCl, 0.02% sodium azide and 50% glycerol. Store at +4°C short term. Store at -20°C long term. Avoid freeze / thaw cycle.

Protein Information

Name	FRAT1
Function	Positively regulates the Wnt signaling pathway by stabilizing beta-catenin through the association with GSK-3. May play a role in tumor progression and collaborate with PIM1 and MYC in lymphomagenesis.
Cellular Location	Cytoplasm.

Images

Western blot analysis of FRAT1 expression in HeLa cell lysate.



Please note: All products are 'FOR RESEARCH USE ONLY. NOT FOR USE IN DIAGNOSTIC OR THERAPEUTIC PROCEDURES'.