

LAT Antibody

Rabbit mAb

Catalog # AP92876

Product Information

Application	WB, IHC
Primary Accession	O43561
Reactivity	Human
Clonality	Monoclonal
Other Names	lat; LAT1; pp36;
Isotype	Rabbit IgG
Host	Rabbit
Calculated MW	27930

Additional Information

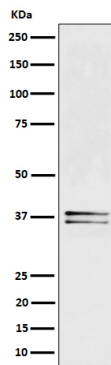
Dilution	WB 1:500~1:2000 IHC 1:50~1:200
Purification	Affinity-chromatography
Immunogen	A synthesized peptide derived from human LAT
Description	Required for TCR (T-cell antigen receptor)- and pre-TCR-mediated signaling, both in mature T-cells and during their development. Involved in FCGR3 (low affinity immunoglobulin gamma Fc region receptor III)-mediated signaling in natural killer cells and FCER1 (high affinity immunoglobulin epsilon receptor)-mediated signaling in mast cells.
Storage Condition and Buffer	Rabbit IgG in phosphate buffered saline , pH 7.4, 150mM NaCl, 0.02% sodium azide and 50% glycerol. Store at +4°C short term. Store at -20°C long term. Avoid freeze / thaw cycle.

Protein Information

Name	LAT
Function	Required for TCR (T-cell antigen receptor)- and pre-TCR- mediated signaling, both in mature T-cells and during their development (PubMed: 23514740 , PubMed: 25907557). Involved in FCGR3 (low affinity immunoglobulin gamma Fc region receptor III)-mediated signaling in natural killer cells and FCER1 (high affinity immunoglobulin epsilon receptor)-mediated signaling in mast cells. Couples activation of these receptors and their associated kinases with distal intracellular events such as mobilization of intracellular calcium stores, PKC activation, MAPK activation or cytoskeletal reorganization through the recruitment of PLCG1, GRB2, GRAP2, and other signaling molecules.
Cellular Location	Cell membrane; Single-pass type III membrane protein. Note=Present in lipid rafts
Tissue Location	Expressed in thymus, T-cells, NK cells, mast cells and, at lower levels, in

spleen. Present in T-cells but not B-cells (at protein level).

Images



Western blot analysis of LAT expression in Jurkat cell lysate.

Please note: All products are 'FOR RESEARCH USE ONLY. NOT FOR USE IN DIAGNOSTIC OR THERAPEUTIC PROCEDURES'.