

R Cadherin Antibody

Rabbit mAb

Catalog # AP92877

Product Information

Application	WB
Primary Accession	P55283
Reactivity	Rat, Human, Mouse
Clonality	Monoclonal
Other Names	Cadherin 4; cdh4; R CAD; Retinal cadherin;
Isotype	Rabbit IgG
Host	Rabbit
Calculated MW	100281

Additional Information

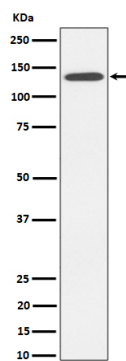
Dilution	WB 1:500~1:2000
Purification	Affinity-chromatography
Immunogen	A synthesized peptide derived from human R Cadherin
Description	Cadherins are calcium dependent cell adhesion proteins. They preferentially interact with themselves in a homophilic manner in connecting cells; cadherins may thus contribute to the sorting of heterogeneous cell types. May play an important role in retinal development.
Storage Condition and Buffer	Rabbit IgG in phosphate buffered saline , pH 7.4, 150mM NaCl, 0.02% sodium azide and 50% glycerol. Store at +4°C short term. Store at -20°C long term. Avoid freeze / thaw cycle.

Protein Information

Name	CDH4
Function	Cadherins are calcium-dependent cell adhesion proteins. They preferentially interact with themselves in a homophilic manner in connecting cells; cadherins may thus contribute to the sorting of heterogeneous cell types. May play an important role in retinal development.
Cellular Location	Cell membrane; Single-pass type I membrane protein
Tissue Location	Expressed mainly in brain but also found in other tissues

Images

Western blot analysis of R Cadherin expression in HepG2 cell lysate.



Please note: All products are 'FOR RESEARCH USE ONLY. NOT FOR USE IN DIAGNOSTIC OR THERAPEUTIC PROCEDURES'.