

Nodal Antibody

Rabbit mAb

Catalog # AP92882

Product Information

Application	WB
Primary Accession	Q96S42
Reactivity	Human
Clonality	Monoclonal
Other Names	HTX5; Nodal;

Isotype	Rabbit IgG
Host	Rabbit
Calculated MW	39561

Additional Information

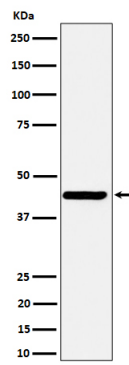
Dilution	WB 1:500~1:2000
Purification	Affinity-chromatography
Immunogen	A synthesized peptide derived from human Nodal
Description	Essential for mesoderm formation and axial patterning during embryonic development.
Storage Condition and Buffer	Rabbit IgG in phosphate buffered saline , pH 7.4, 150mM NaCl, 0.02% sodium azide and 50% glycerol. Store at +4°C short term. Store at -20°C long term. Avoid freeze / thaw cycle.

Protein Information

Name	NODAL
Function	Essential for mesoderm formation and axial patterning during embryonic development.
Cellular Location	Secreted.

Images

Western blot analysis of Nodal expression in SH-SY5Y cell lysate.



Please note: All products are 'FOR RESEARCH USE ONLY. NOT FOR USE IN DIAGNOSTIC OR THERAPEUTIC PROCEDURES'.