

NAT1 Antibody

Rabbit mAb

Catalog # AP92888

Product Information

Application	WB, IF, FC, ICC
Primary Accession	P18440
Reactivity	Human
Clonality	Monoclonal
Other Names	AAC1; Arylamide acetylase 1; mNAT; N acetyltransferase type 1; nat1;
Isotype	Rabbit IgG
Host	Rabbit
Calculated MW	33899

Additional Information

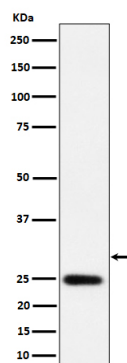
Dilution	WB 1:500~1:2000 ICC/IF 1:50~1:200 FC 1:50
Purification	Affinity-chromatography
Immunogen	A synthesized peptide derived from human NAT1
Description	Participates in the detoxification of a plethora of hydrazine and arylamine drugs. Catalyzes the N- or O-acetylation of various arylamine and heterocyclic amine substrates and is able to bioactivate several known carcinogens.
Storage Condition and Buffer	Rabbit IgG in phosphate buffered saline , pH 7.4, 150mM NaCl, 0.02% sodium azide and 50% glycerol. Store at +4°C short term. Store at -20°C long term. Avoid freeze / thaw cycle.

Protein Information

Name	NAT1
Synonyms	AAC1
Function	Participates in the detoxification of a plethora of hydrazine and arylamine drugs. Catalyzes the N- or O-acetylation of various arylamine and heterocyclic amine substrates and is able to bioactivate several known carcinogens.
Cellular Location	Cytoplasm.

Images

Western blot analysis of NAT1 expression in LnCaP cell lysate.



Please note: All products are 'FOR RESEARCH USE ONLY. NOT FOR USE IN DIAGNOSTIC OR THERAPEUTIC PROCEDURES'.