

SARA Antibody

Rabbit mAb

Catalog # AP92893

Product Information

Application	WB, IHC
Primary Accession	O95405
Reactivity	Human
Clonality	Monoclonal
Other Names	hSARA; MADHIP; NSP; SAR1; SARA; SARA1; SMADIP; ZFYVE9;
Isotype	Rabbit IgG
Host	Rabbit
Calculated MW	156403

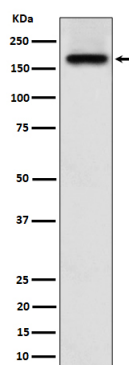
Additional Information

Dilution	WB 1:500~1:2000 IHC 1:50~1:200
Purification	Affinity-chromatography
Immunogen	A synthesized peptide derived from human SARA
Description	Early endosomal protein that functions to recruit SMAD2/SMAD3 to intracellular membranes and to the TGF-beta receptor. Plays a significant role in TGF-mediated signaling by regulating the subcellular location of SMAD2 and SMAD3 and modulating the transcriptional activity of the SMAD3/SMAD4 complex. Possibly associated with TGF-beta receptor internalization.
Storage Condition and Buffer	Rabbit IgG in phosphate buffered saline , pH 7.4, 150mM NaCl, 0.02% sodium azide and 50% glycerol. Store at +4°C short term. Store at -20°C long term. Avoid freeze / thaw cycle.

Protein Information

Name	ZFYVE9
Synonyms	MADHIP, SARA, SMADIP
Function	Early endosomal protein that functions to recruit SMAD2/SMAD3 to intracellular membranes and to the TGF-beta receptor. Plays a significant role in TGF-mediated signaling by regulating the subcellular location of SMAD2 and SMAD3 and modulating the transcriptional activity of the SMAD3/SMAD4 complex. Possibly associated with TGF-beta receptor internalization.
Cellular Location	Cytoplasm. Early endosome membrane.
Tissue Location	Ubiquitous. In the brain found primarily in the cerebrovascular smooth muscle cells and reactive astrocytes

Images



Western blot analysis of SARA expression in A673 cell lysate.

Please note: All products are 'FOR RESEARCH USE ONLY. NOT FOR USE IN DIAGNOSTIC OR THERAPEUTIC PROCEDURES'.