

UBA3 Antibody

Rabbit mAb

Catalog # AP92895

Product Information

Application	WB
Primary Accession	Q8TBC4
Reactivity	Rat, Human, Mouse
Clonality	Monoclonal
Other Names	hUba3; NEDD8 activating enzyme E1C; uba3; UBE1C;
Isotype	Rabbit IgG
Host	Rabbit
Calculated MW	51852

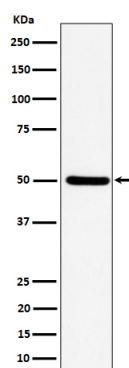
Additional Information

Dilution	WB 1:500~1:2000
Purification	Affinity-chromatography
Immunogen	A synthesized peptide derived from human UBA3
Description	Catalytic subunit of the dimeric UBA3-NAE1 E1 enzyme. E1 activates NEDD8 by first adenylating its C-terminal glycine residue with ATP, thereafter linking this residue to the side chain of the catalytic cysteine, yielding a NEDD8-UBA3 thioester and free AMP. E1 finally transfers NEDD8 to the catalytic cysteine of UBE2M. Down-regulates steroid receptor activity. Necessary for cell cycle progression.
Storage Condition and Buffer	Rabbit IgG in phosphate buffered saline , pH 7.4, 150mM NaCl, 0.02% sodium azide and 50% glycerol. Store at +4°C short term. Store at -20°C long term. Avoid freeze / thaw cycle.

Protein Information

Name	UBA3
Synonyms	UBE1C
Function	Catalytic subunit of the dimeric UBA3-NAE1 E1 enzyme. E1 activates NEDD8 by first adenylating its C-terminal glycine residue with ATP, thereafter linking this residue to the side chain of the catalytic cysteine, yielding a NEDD8-UBA3 thioester and free AMP. E1 finally transfers NEDD8 to the catalytic cysteine of UBE2M. Down- regulates steroid receptor activity. Necessary for cell cycle progression.
Tissue Location	Ubiquitously expressed.

Images



Western blot analysis of UBA3 expression in HeLa cell lysate.

Please note: All products are 'FOR RESEARCH USE ONLY. NOT FOR USE IN DIAGNOSTIC OR THERAPEUTIC PROCEDURES'.