

USF1 Antibody

Rabbit mAb

Catalog # AP92896

Product Information

Application	WB
Primary Accession	P22415
Reactivity	Rat, Human, Mouse
Clonality	Monoclonal
Other Names	bHLHb11; FCHL; FCHL1; HYPLIP1; Major late transcription factor 1; MLTF; MLTFI; UEF; Upstream stimulatory factor 1; USF;
Isotype	Rabbit IgG
Host	Rabbit
Calculated MW	33538

Additional Information

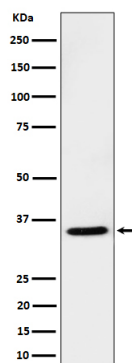
Dilution	WB 1:500~1:2000
Purification	Affinity-chromatography
Immunogen	A synthesized peptide derived from human USF1
Description	Transcription factor that binds to a symmetrical DNA sequence (E-boxes) (5'-CACGTG-3') that is found in a variety of viral and cellular promoters.
Storage Condition and Buffer	Rabbit IgG in phosphate buffered saline , pH 7.4, 150mM NaCl, 0.02% sodium azide and 50% glycerol. Store at +4°C short term. Store at -20°C long term. Avoid freeze / thaw cycle.

Protein Information

Name	USF1
Synonyms	BHLHB11, USF
Function	Transcription factor that binds to a symmetrical DNA sequence (E-boxes) (5'-CACGTG-3') that is found in a variety of viral and cellular promoters.
Cellular Location	Nucleus.

Images

Western blot analysis of USF1 expression in Jurkat cell lysate.



Please note: All products are 'FOR RESEARCH USE ONLY. NOT FOR USE IN DIAGNOSTIC OR THERAPEUTIC PROCEDURES'.