

ING1 Antibody

Rabbit mAb

Catalog # AP92897

Product Information

Application	WB
Primary Accession	Q9UK53
Reactivity	Rat, Human, Mouse
Clonality	Monoclonal
Other Names	Growth inhibitor ING1; Ing1; Inhibitor of growth 1; mING1h; p24ING1c; p33; p33ING1; p33ING1b; p33ING1c; p37Ing1b; p47; p47ING1a; Tumor suppressor ING1;
Isotype	Rabbit IgG
Host	Rabbit
Calculated MW	46738

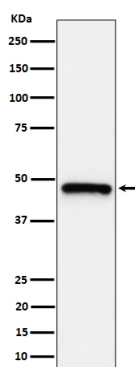
Additional Information

Dilution	WB 1:500~1:2000
Purification	Affinity-chromatography
Immunogen	A synthesized peptide derived from human ING1
Description	Cooperates with p53/TP53 in the negative regulatory pathway of cell growth by modulating p53-dependent transcriptional activation. Implicated as a tumor suppressor gene.
Storage Condition and Buffer	Rabbit IgG in phosphate buffered saline , pH 7.4, 150mM NaCl, 0.02% sodium azide and 50% glycerol. Store at +4°C short term. Store at -20°C long term. Avoid freeze / thaw cycle.

Protein Information

Name	ING1
Function	Cooperates with p53/TP53 in the negative regulatory pathway of cell growth by modulating p53-dependent transcriptional activation. Implicated as a tumor suppressor gene.
Cellular Location	Nucleus.
Tissue Location	Isoform 2 was expressed in all normal tissues and cells examined, as well as in all breast cancer and melanoma cell lines examined. Isoform 3 was expressed in testis, liver, and kidney, weakly expressed in colon and brain and not expressed in breast and cultured melanocytes. Isoform 4 was highly expressed in testis and weakly expressed in brain, but not expressed in breast, colon, kidney, melanocytes, breast cancer or melanoma cell lines

Images



Western blot analysis of ING1 expression in HeLa cell lysate.

Please note: All products are 'FOR RESEARCH USE ONLY. NOT FOR USE IN DIAGNOSTIC OR THERAPEUTIC PROCEDURES'.