

RGS6 Antibody

Rabbit mAb

Catalog # AP92906

Product Information

Application	WB
Primary Accession	P49758
Reactivity	Human
Clonality	Monoclonal
Other Names	GAP; RGS6; S914;

Isotype	Rabbit IgG
Host	Rabbit
Calculated MW	54423

Additional Information

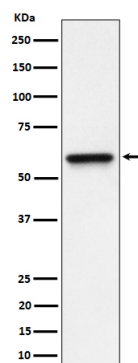
Dilution	WB 1:500~1:2000
Purification	Affinity-chromatography
Immunogen	A synthesized peptide derived from human RGS6
Description	Inhibits signal transduction by increasing the GTPase activity of G protein alpha subunits thereby driving them into their inactive GDP-bound form. Activity on G(o)-alpha is specifically enhanced by the RGS6/Gbeta5 dimer.
Storage Condition and Buffer	Rabbit IgG in phosphate buffered saline , pH 7.4, 150mM NaCl, 0.02% sodium azide and 50% glycerol. Store at +4°C short term. Store at -20°C long term. Avoid freeze / thaw cycle.

Protein Information

Name	RGS6
Function	Regulates G protein-coupled receptor signaling cascades. Inhibits signal transduction by increasing the GTPase activity of G protein alpha subunits, thereby driving them into their inactive GDP- bound form. The RGS6/GNB5 dimer enhances GNAO1 GTPase activity (PubMed: 10521509).
Cellular Location	Cytoplasm. Cytoplasm, cytosol. Membrane; Peripheral membrane protein. Nucleus Cell membrane {ECO:0000250 UniProtKB:Q9Z2H2}. Note=Interaction with GNB5 mediates translocation to the nucleus

Images

Western blot analysis of RGS6 expression in HeLa cell lysate.



Please note: All products are 'FOR RESEARCH USE ONLY. NOT FOR USE IN DIAGNOSTIC OR THERAPEUTIC PROCEDURES'.