

# CTP synthase / CTPS Antibody

Rabbit mAb

Catalog # AP92913

## Product Information

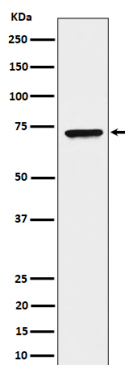
<b>Application</b>	WB, FC
<b>Primary Accession</b>	<a href="#">P17812</a>
<b>Reactivity</b>	Human, Mouse
<b>Clonality</b>	Monoclonal
<b>Other Names</b>	CTP synthase 1; CTPS; IMD24;
<b>Isotype</b>	Rabbit IgG
<b>Host</b>	Rabbit
<b>Calculated MW</b>	72 KDa

## Additional Information

<b>Dilution</b>	WB 1:500~1:2000 FC 1:50
<b>Purification</b>	Affinity-chromatography
<b>Immunogen</b>	A synthesized peptide derived from human CTP synthase / CTPS
<b>Description</b>	CTP synthase (CTPS) catalyzes the ATP-dependent conversion of UTP to CTP using either L-glutamine or ammonia as the source of nitrogen. The enzyme is important in the biosynthesis nucleic acids. It has a key role in cell growth, development, and tumorigenesis.
<b>Storage Condition and Buffer</b>	Rabbit IgG in phosphate buffered saline , pH 7.4, 150mM NaCl, 0.02% sodium azide and 50% glycerol. Store at +4°C short term. Store at -20°C long term. Avoid freeze / thaw cycle.

## Protein Information

## Images



Western blot analysis of CTP synthase / CTPS expression in HeLa cell lysate.

Please note: All products are 'FOR RESEARCH USE ONLY. NOT FOR USE IN DIAGNOSTIC OR THERAPEUTIC PROCEDURES'.