

SSTR3 Antibody

Rabbit mAb

Catalog # AP92915

Product Information

Application	WB, FC
Primary Accession	P32745
Reactivity	Human
Clonality	Monoclonal
Other Names	Smstr3; SS3R; SSR28; Sst3; SSTR3;
Isotype	Rabbit IgG
Host	Rabbit
Calculated MW	45847

Additional Information

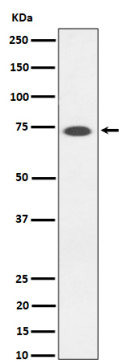
Dilution	WB 1:500~1:2000 FC 1:50
Purification	Affinity-chromatography
Immunogen	A synthesized peptide derived from human SSTR3
Description	Receptor for somatostatins-14 and -28. This receptor is coupled via pertussis toxin sensitive G proteins to inhibition of adenylyl cyclase.
Storage Condition and Buffer	Rabbit IgG in phosphate buffered saline , pH 7.4, 150mM NaCl, 0.02% sodium azide and 50% glycerol. Store at +4°C short term. Store at -20°C long term. Avoid freeze / thaw cycle.

Protein Information

Name	SSTR3
Function	Receptor for somatostatin-14 and -28. This receptor is coupled via pertussis toxin sensitive G proteins to inhibition of adenylyl cyclase.
Cellular Location	Cell membrane; Multi-pass membrane protein. Note=Internalized into endoplasmic vesicles upon somatostatin-stimulation.
Tissue Location	Brain, pituitary and pancreas.

Images

Western blot analysis of SSTR3 expression in Somatostatin Receptor 3 SSTR3 transfected 293T cell lysate.



Please note: All products are 'FOR RESEARCH USE ONLY. NOT FOR USE IN DIAGNOSTIC OR THERAPEUTIC PROCEDURES'.