

SPINK5 / LEKTI Antibody

Rabbit mAb

Catalog # AP92918

Product Information

Application	WB
Primary Accession	Q9NQ38
Reactivity	Rat, Human, Mouse
Clonality	Monoclonal
Other Names	LEKTI; NETS; SPINK5; VAKTI;
Isotype	Rabbit IgG
Host	Rabbit
Calculated MW	120714

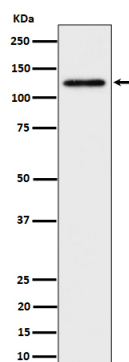
Additional Information

Dilution	WB 1:500~1:2000
Purification	Affinity-chromatography
Immunogen	A synthesized peptide derived from human SPINK5 / LEKTI
Description	Serine protease inhibitor, probably important for the anti-inflammatory and/or antimicrobial protection of mucous epithelia. Contribute to the integrity and protective barrier function of the skin by regulating the activity of defense-activating and desquamation-involved proteases. Inhibits KLK5, it's major target, in a pH-dependent manner. Inhibits KLK7, KLK14 CASP14, and trypsin.
Storage Condition and Buffer	Rabbit IgG in phosphate buffered saline , pH 7.4, 150mM NaCl, 0.02% sodium azide and 50% glycerol. Store at +4°C short term. Store at -20°C long term. Avoid freeze / thaw cycle.

Protein Information

Name	SPINK5
Function	Serine protease inhibitor, probably important for the anti- inflammatory and/or antimicrobial protection of mucous epithelia. Contribute to the integrity and protective barrier function of the skin by regulating the activity of defense-activating and desquamation- involved proteases. Inhibits KLK5, its major target, in a pH-dependent manner. Inhibits KLK7, KLK14 CASP14, and trypsin.
Cellular Location	Secreted.
Tissue Location	Highly expressed in the thymus and stratum corneum. Also found in the oral mucosa, parathyroid gland, Bartholin's glands, tonsils, and vaginal epithelium. Very low levels are detected in lung, kidney, and prostate.

Images



Western blot analysis of SPINK5 / LEKTI expression in HeLa cell lysate.

Please note: All products are 'FOR RESEARCH USE ONLY. NOT FOR USE IN DIAGNOSTIC OR THERAPEUTIC PROCEDURES'.