

NUP50 Antibody

Rabbit mAb

Catalog # AP92920

Product Information

Application	WB, IF, ICC
Primary Accession	Q9UKX7
Reactivity	Rat, Human, Mouse
Clonality	Monoclonal
Other Names	NPAP60; NPAP60L; Nucleoporin 50kDa; Nup50;
Isotype	Rabbit IgG
Host	Rabbit
Calculated MW	50144

Additional Information

Dilution	WB 1:500~1:2000 ICC/IF 1:50~1:200
Purification	Affinity-chromatography
Immunogen	A synthesized peptide derived from human NUP50
Description	Component of the nuclear pore complex that has a direct role in nuclear protein import. Actively displaces NLSs from importin-alpha, and facilitates disassembly of the importin-alpha:beta-cargo complex and importin recycling.
Storage Condition and Buffer	Rabbit IgG in phosphate buffered saline , pH 7.4, 150mM NaCl, 0.02% sodium azide and 50% glycerol. Store at +4°C short term. Store at -20°C long term. Avoid freeze / thaw cycle.

Protein Information

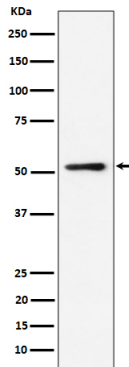
Name	NUP50
Synonyms	NPAP60L
Function	Component of the nuclear pore complex that has a direct role in nuclear protein import (PubMed: 20016008). Actively displaces NLSs from importin-alpha, and facilitates disassembly of the importin- alpha:beta-cargo complex and importin recycling (PubMed: 20016008). Interacts with regulatory proteins of cell cycle progression including CDKN1B (By similarity). This interaction is required for correct intracellular transport and degradation of CDKN1B (By similarity).
Cellular Location	Nucleus, nuclear pore complex. Nucleus membrane {ECO:0000250 UniProtKB:O08587}; Peripheral membrane protein {ECO:0000250 UniProtKB:O08587}; Nucleoplasmic side {ECO:0000250 UniProtKB:O08587}. Note=Localizes to the nucleoplasmic fibrils of the nuclear pore complex (By similarity). Dissociates from the NPC

structure early during prophase of mitosis (PubMed:12802065) Associates with the newly formed nuclear membrane during telophase (PubMed:12802065). In the testis, the localization changes during germ cell differentiation from the nuclear surface in spermatocytes to the whole nucleus (interior) in spermatids and back to the nuclear surface in spermatozoa (By similarity). {ECO:0000250|UniProtKB:O08587, ECO:0000269|PubMed:12802065}

Tissue Location

Ubiquitous. Highest levels in testis, peripheral blood leukocytes and fetal liver

Images



Western blot analysis of NUP50 expression in HeLa cell lysate.

Please note: All products are 'FOR RESEARCH USE ONLY. NOT FOR USE IN DIAGNOSTIC OR THERAPEUTIC PROCEDURES'.