

Phospho-Nucleolin (T84) Antibody

Rabbit mAb

Catalog # AP92921

Product Information

| | |
|--------------------------|------------------------------------|
| Application | WB, IHC |
| Primary Accession | P19338 |
| Reactivity | Human |
| Clonality | Monoclonal |
| Other Names | NCL; Nucl; Nucleolin; Protein C23; |
| Isotype | Rabbit IgG |
| Host | Rabbit |
| Calculated MW | 76614 |

Additional Information

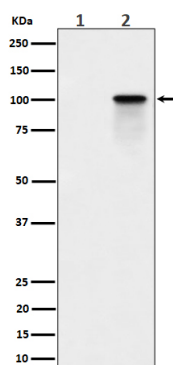
| | |
|-------------------------------------|---|
| Dilution | WB 1:500~1:2000 IHC 1:50~1:200 |
| Purification | Affinity-chromatography |
| Immunogen | A synthesized peptide derived from human Phospho-Nucleolin (T84) |
| Description | Nucleolin is the major nucleolar protein of growing eukaryotic cells. It is found associated with intranucleolar chromatin and pre-ribosomal particles. |
| Storage Condition and Buffer | Rabbit IgG in phosphate buffered saline , pH 7.4, 150mM NaCl, 0.02% sodium azide and 50% glycerol. Store at +4°C short term. Store at -20°C long term. Avoid freeze / thaw cycle. |

Protein Information

| | |
|--------------------------|--|
| Name | NCL |
| Function | Nucleolin is the major nucleolar protein of growing eukaryotic cells. It is found associated with intranucleolar chromatin and pre-ribosomal particles. It induces chromatin decondensation by binding to histone H1. It is thought to play a role in pre-rRNA transcription and ribosome assembly. May play a role in the process of transcriptional elongation. Binds RNA oligonucleotides with 5'-UUAGGG- 3' repeats more tightly than the telomeric single-stranded DNA 5'- TTAGGG-3' repeats. |
| Cellular Location | Nucleus, nucleolus. Cytoplasm. Note=Localized in cytoplasmic mRNP granules containing untranslated mRNAs |

Images

Western blot analysis of Phospho-Nucleolin (T84)
expression in (1) K562 cell lysate; (2) K562 cell treated



with Calyculin A lysate.

Please note: All products are 'FOR RESEARCH USE ONLY. NOT FOR USE IN DIAGNOSTIC OR THERAPEUTIC PROCEDURES'.