

EPHX2 Antibody

Rabbit mAb

Catalog # AP92925

Product Information

Application	WB
Primary Accession	P34913
Reactivity	Human
Clonality	Monoclonal
Other Names	CEH; EPHX2; Epoxide hydrolase 2; SHE;
Isotype	Rabbit IgG
Host	Rabbit
Calculated MW	62616

Additional Information

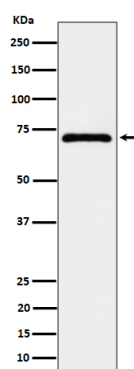
Dilution	WB 1:500~1:2000
Purification	Affinity-chromatography
Immunogen	A synthesized peptide derived from human EPHX2
Description	Acts on epoxides (alkene oxides, oxiranes) and arene oxides. Plays a role in xenobiotic metabolism by degrading potentially toxic epoxides. Also determines steady-state levels of physiological mediators. Has low phosphatase activity.
Storage Condition and Buffer	Rabbit IgG in phosphate buffered saline , pH 7.4, 150mM NaCl, 0.02% sodium azide and 50% glycerol. Store at +4°C short term. Store at -20°C long term. Avoid freeze / thaw cycle.

Protein Information

Name	EPHX2 (HGNC:3402)
Function	Bifunctional enzyme (PubMed: 12574510). The C-terminal domain has epoxide hydrolase activity and acts on epoxides (alkene oxides, oxiranes) and arene oxides (PubMed: 12574510 , PubMed: 12869654 , PubMed: 22798687). Plays a role in xenobiotic metabolism by degrading potentially toxic epoxides (By similarity). Also determines steady- state levels of physiological mediators (PubMed: 12574510 , PubMed: 12869654 , PubMed: 21217101 , PubMed: 22798687).
Cellular Location	Cytoplasm. Peroxisome.

Images

Western blot analysis of EPHX2 expression in MCF7 cell



lysate.

Please note: All products are 'FOR RESEARCH USE ONLY. NOT FOR USE IN DIAGNOSTIC OR THERAPEUTIC PROCEDURES'.