

EXOC3 Antibody

Rabbit mAb

Catalog # AP92930

Product Information

Application	WB, IHC, IF, ICC, IP, IHF
Primary Accession	O60645
Reactivity	Rat, Human, Mouse
Clonality	Monoclonal
Other Names	Exoc3; Sec6; SEC6L1; Sec6p;
Isotype	Rabbit IgG
Host	Rabbit
Calculated MW	85567

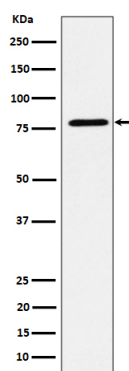
Additional Information

Dilution	WB 1:500~1:2000 IHC 1:50~1:200 ICC/IF 1:50~1:200 IP 1:50
Purification	Affinity-chromatography
Immunogen	A synthesized peptide derived from human EXOC3
Description	Component of the exocyst complex involved in the docking of exocytic vesicles with fusion sites on the plasma membrane.
Storage Condition and Buffer	Rabbit IgG in phosphate buffered saline , pH 7.4, 150mM NaCl, 0.02% sodium azide and 50% glycerol. Store at +4°C short term. Store at -20°C long term. Avoid freeze / thaw cycle.

Protein Information

Name	EXOC3
Synonyms	SEC6, SEC6L1
Function	Component of the exocyst complex involved in the docking of exocytic vesicles with fusion sites on the plasma membrane.
Cellular Location	Cytoplasm {ECO:0000250 UniProtKB:O54921}. Cytoplasm, perinuclear region {ECO:0000250 UniProtKB:O54921}. Cell projection, growth cone {ECO:0000250 UniProtKB:O54921}. Midbody. Golgi apparatus. Cell projection, neuron projection {ECO:0000250 UniProtKB:Q62825}. Note=Perinuclear in undifferentiated cells. Redistributes to growing neurites and growth cones during neuronal differentiation (By similarity). During mitosis, early recruitment to the midbody requires RALA, but not RALB, and EXOC2. In late stages of cytokinesis, localization to the midbody is RALB- dependent (PubMed:18756269). {ECO:0000250 UniProtKB:O54921, ECO:0000269 PubMed:18756269}
Tissue Location	Expressed in epididymis (at protein level).

Images



Western blot analysis of EXOC3 expression in MCF7 cell lysate.

Please note: All products are 'FOR RESEARCH USE ONLY. NOT FOR USE IN DIAGNOSTIC OR THERAPEUTIC PROCEDURES'.