

# SF3A3 Antibody

Rabbit mAb

Catalog # AP92933

## Product Information

<b>Application</b>	WB, IHC, IF, ICC, IHF
<b>Primary Accession</b>	<a href="#">Q12874</a>
<b>Reactivity</b>	Rat, Human, Mouse
<b>Clonality</b>	Monoclonal
<b>Other Names</b>	SF3A3; PRP9; PRPF9; SAP61; SF3a60;
<b>Isotype</b>	Rabbit IgG
<b>Host</b>	Rabbit
<b>Calculated MW</b>	58849

## Additional Information

<b>Dilution</b>	WB 1:500~1:2000 IHC 1:50~1:200 ICC/IF 1:50~1:200
<b>Purification</b>	Affinity-chromatography
<b>Immunogen</b>	A synthesized peptide derived from human SF3A3
<b>Description</b>	SF3A3 is subunit 3 of the splicing factor SF3A. Splicing factor 3a is a heterotrimer consisting of subunits 1, 2 and 3, and is necessary for the conversion of 15S U2 snRNP into an active 17S particle that performs pre-mRNA splicing. SF3A interacts with the pre-mRNA branch site early during spliceosome formation.
<b>Storage Condition and Buffer</b>	Rabbit IgG in phosphate buffered saline , pH 7.4, 150mM NaCl, 0.02% sodium azide and 50% glycerol. Store at +4°C short term. Store at -20°C long term. Avoid freeze / thaw cycle.

## Protein Information

<b>Name</b>	SF3A3
<b>Synonyms</b>	SAP61
<b>Function</b>	Component of the 17S U2 SnRNP complex of the spliceosome, a large ribonucleoprotein complex that removes introns from transcribed pre-mRNAs (PubMed: <a href="#">10882114</a> , PubMed: <a href="#">11533230</a> , PubMed: <a href="#">32494006</a> , PubMed: <a href="#">34822310</a> , PubMed: <a href="#">8022796</a> ). The 17S U2 SnRNP complex (1) directly participates in early spliceosome assembly and (2) mediates recognition of the intron branch site during pre-mRNA splicing by promoting the selection of the pre-mRNA branch-site adenosine, the nucleophile for the first step of splicing (PubMed: <a href="#">10882114</a> , PubMed: <a href="#">11533230</a> , PubMed: <a href="#">32494006</a> , PubMed: <a href="#">34822310</a> ). Within the 17S U2 SnRNP complex, SF3A3 is part of the SF3A subcomplex that contributes to the assembly of the 17S U2 snRNP, and the subsequent assembly of the pre-spliceosome 'E' complex and the pre-catalytic spliceosome 'A' complex (PubMed: <a href="#">10882114</a> ,

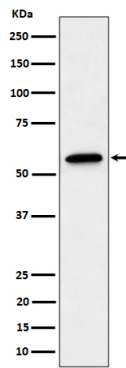
PubMed:[11533230](#)). Involved in pre-mRNA splicing as a component of pre-catalytic spliceosome 'B' complexes (PubMed:[29360106](#), PubMed:[30315277](#)).

**Cellular Location** Nucleus speckle. Nucleus

**Tissue Location** Ubiquitous..

## Images

---



Western blot analysis of SF3A3 expression in A431 cell lysate.

Please note: All products are 'FOR RESEARCH USE ONLY. NOT FOR USE IN DIAGNOSTIC OR THERAPEUTIC PROCEDURES'.