

CD32A + CD32B + CD32C Antibody

Rabbit mAb

Catalog # AP92935

Product Information

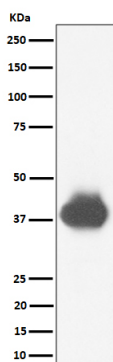
Application	WB, IHC
Primary Accession	P12318/P31994/P31995
Reactivity	Human
Clonality	Monoclonal
Other Names	CD32; CD32A; CD32B; CD32C; CDw32; FCG2; FcGR; FCGR2; FCGR2A; FCGR2A1; FCGR2B; FCGR2C; Fcgr3; Fcgr3a; FcgRII; FcRII a; FCRII; FcRII b; FcRII c; FcRIIC; IGFR2;
Isotype	Rabbit IgG
Host	Rabbit
Calculated MW	37 KDa

Additional Information

Dilution	WB 1:500~1:2000 IHC 1:50~1:200
Purification	Affinity-chromatography
Immunogen	A synthesized peptide derived from human CD32A + CD32B + CD32C
Description	Binds to the Fc region of immunoglobulins gamma. Low affinity receptor. By binding to IgG it initiates cellular responses against pathogens and soluble antigens. Promotes phagocytosis of opsonized antigens.
Storage Condition and Buffer	Rabbit IgG in phosphate buffered saline , pH 7.4, 150mM NaCl, 0.02% sodium azide and 50% glycerol. Store at +4°C short term. Store at -20°C long term. Avoid freeze / thaw cycle.

Protein Information

Images



Western blot analysis of CD32A + CD32B + CD32C expression in U937 cell lysate.

Please note: All products are 'FOR RESEARCH USE ONLY. NOT FOR USE IN DIAGNOSTIC OR THERAPEUTIC PROCEDURES'.