

Phospho-Nucleolin (T76) Antibody

Rabbit mAb

Catalog # AP92936

Product Information

Application	WB, IHC
Primary Accession	P19338
Reactivity	Human
Clonality	Monoclonal
Other Names	MS1116; NCL; Nucl; Nucleolin; Protein C23;
Isotype	Rabbit IgG
Host	Rabbit
Calculated MW	76614

Additional Information

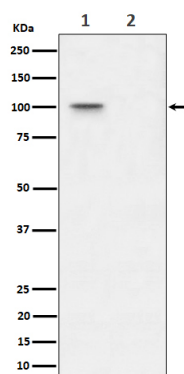
Dilution	WB 1:500~1:2000 IHC 1:50~1:200
Purification	Affinity-chromatography
Immunogen	A synthesized peptide derived from human Phospho-Nucleolin (T76)
Description	Nucleolin is the major nucleolar protein of growing eukaryotic cells. It is found associated with intranucleolar chromatin and pre-ribosomal particles. It induces chromatin decondensation by binding to histone H1.
Storage Condition and Buffer	Rabbit IgG in phosphate buffered saline , pH 7.4, 150mM NaCl, 0.02% sodium azide and 50% glycerol. Store at +4°C short term. Store at -20°C long term. Avoid freeze / thaw cycle.

Protein Information

Name	NCL
Function	Nucleolin is the major nucleolar protein of growing eukaryotic cells. It is found associated with intranucleolar chromatin and pre-ribosomal particles. It induces chromatin decondensation by binding to histone H1. It is thought to play a role in pre-rRNA transcription and ribosome assembly. May play a role in the process of transcriptional elongation. Binds RNA oligonucleotides with 5'-UUAGGG- 3' repeats more tightly than the telomeric single-stranded DNA 5'- TTAGGG-3' repeats.
Cellular Location	Nucleus, nucleolus. Cytoplasm. Note=Localized in cytoplasmic mRNP granules containing untranslated mRNAs

Images

Western blot analysis of Phospho-Nucleolin (T76)



expression in (1) 293T cell lysate; (2) 293T cell treated with Lambda Phosphatase lysate.

Please note: All products are 'FOR RESEARCH USE ONLY. NOT FOR USE IN DIAGNOSTIC OR THERAPEUTIC PROCEDURES'.