

Syndecan 3 Antibody

Rabbit mAb

Catalog # AP92937

Product Information

Application	WB
Primary Accession	O75056
Reactivity	Rat, Human, Mouse
Clonality	Monoclonal
Other Names	Sdc3; SDCN; SYND3; syndecan proteoglycan 3;
Isotype	Rabbit IgG
Host	Rabbit
Calculated MW	45497

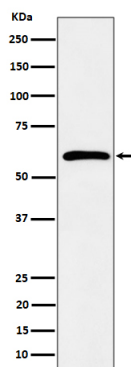
Additional Information

Dilution	WB 1:500~1:2000
Purification	Affinity-chromatography
Immunogen	A synthesized peptide derived from human Syndecan 3
Description	Cell surface proteoglycan that may bear heparan sulfate (By similarity). May have a role in the organization of cell shape by affecting the actin cytoskeleton, possibly by transferring signals from the cell surface in a sugar-dependent mechanism.
Storage Condition and Buffer	Rabbit IgG in phosphate buffered saline , pH 7.4, 150mM NaCl, 0.02% sodium azide and 50% glycerol. Store at +4°C short term. Store at -20°C long term. Avoid freeze / thaw cycle.

Protein Information

Name	SDC3
Synonyms	KIAA0468
Function	Cell surface proteoglycan that may bear heparan sulfate (By similarity). May have a role in the organization of cell shape by affecting the actin cytoskeleton, possibly by transferring signals from the cell surface in a sugar-dependent mechanism.
Cellular Location	Cell membrane; Single-pass type I membrane protein
Tissue Location	Expressed in the nervous system, the adrenal gland, and the spleen.

Images



Western blot analysis of Syndecan 3 expression in K562 cell lysate.

Please note: All products are 'FOR RESEARCH USE ONLY. NOT FOR USE IN DIAGNOSTIC OR THERAPEUTIC PROCEDURES'.