

CEP43 Antibody

Rabbit mAb

Catalog # AP92943

Product Information

Application	WB, IF, ICC
Primary Accession	O95684
Reactivity	Rat, Human, Mouse
Clonality	Monoclonal
Other Names	FGFR1OP; FOP;
Isotype	Rabbit IgG
Host	Rabbit
Calculated MW	43065

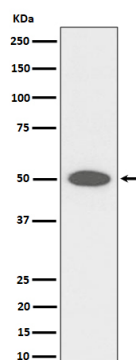
Additional Information

Dilution	WB 1:500~1:2000 ICC/IF 1:50~1:200
Purification	Affinity-chromatography
Immunogen	A synthesized peptide derived from human CEP43
Description	Required for anchoring microtubules to the centrosomes.
Storage Condition and Buffer	Rabbit IgG in phosphate buffered saline , pH 7.4, 150mM NaCl, 0.02% sodium azide and 50% glycerol. Store at +4°C short term. Store at -20°C long term. Avoid freeze / thaw cycle.

Protein Information

Name	CEP43 (HGNC:17012)
Synonyms	FGFR1OP, FOP
Function	Required for anchoring microtubules to the centrosomes (PubMed: 16314388 , PubMed: 28659385). Required for ciliation (PubMed: 28625565 , PubMed: 28659385).
Cellular Location	Cytoplasm, cytoskeleton, microtubule organizing center, centrosome. Cytoplasm, cytoskeleton, microtubule organizing center, centrosome, centriole. Cytoplasm, cytoskeleton, cilium basal body. Note=Associated with gamma-tubulin (PubMed:16314388). Localizes on both mother and daughter centrioles (PubMed:28428259, PubMed:28625565). Localizes to an axial position on the mother centriole (PubMed:28625565). Localizes to the distal end of the centriole partly on the subdistal appendage region (PubMed:28659385).
Tissue Location	Ubiquitous. Highly expressed in heart, liver, muscle, kidney, intestine, colon, adrenal gland, prostate, testis, and pancreas.

Images



Western blot analysis of CEP43 expression in HeLa cell lysate.

Please note: All products are 'FOR RESEARCH USE ONLY. NOT FOR USE IN DIAGNOSTIC OR THERAPEUTIC PROCEDURES'.