

MRPS31 Antibody

Rabbit mAb

Catalog # AP92944

Product Information

Application	WB
Primary Accession	Q92665
Reactivity	Rat, Human, Mouse
Clonality	Monoclonal
Other Names	IMOGN38; MRPS31; S31mt;
Isotype	Rabbit IgG
Host	Rabbit
Calculated MW	45318

Additional Information

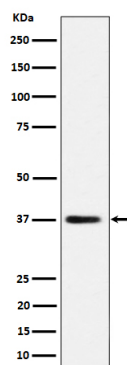
Dilution	WB 1:500~1:2000
Purification	Affinity-chromatography
Immunogen	A synthesized peptide derived from human MRPS31
Description	Component of the mitochondrial ribosome small subunit (28S) which comprises a 12S rRNA and about 30 distinct proteins.
Storage Condition and Buffer	Rabbit IgG in phosphate buffered saline , pH 7.4, 150mM NaCl, 0.02% sodium azide and 50% glycerol. Store at +4°C short term. Store at -20°C long term. Avoid freeze / thaw cycle.

Protein Information

Name	MRPS31
Synonyms	IMOGN38
Cellular Location	Mitochondrion.

Images

Western blot analysis of MRPS31 expression in HepG2 cell lysate.



Please note: All products are 'FOR RESEARCH USE ONLY. NOT FOR USE IN DIAGNOSTIC OR THERAPEUTIC PROCEDURES'.