

# SLC12A1 / NKCC2 Antibody

Rabbit mAb

Catalog # AP92945

## Product Information

---

<b>Application</b>	WB
<b>Primary Accession</b>	<a href="#">Q13621</a>
<b>Reactivity</b>	Human
<b>Clonality</b>	Monoclonal
<b>Other Names</b>	BSC1; NKCC2; Slc12a1;
<b>Isotype</b>	Rabbit IgG
<b>Host</b>	Rabbit
<b>Calculated MW</b>	121450

## Additional Information

---

<b>Dilution</b>	WB 1:500~1:2000
<b>Purification</b>	Affinity-chromatography
<b>Immunogen</b>	A synthesized peptide derived from human SLC12A1 / NKCC2
<b>Description</b>	May play an important role in cell growth and/or transcription.
<b>Storage Condition and Buffer</b>	Rabbit IgG in phosphate buffered saline , pH 7.4, 150mM NaCl, 0.02% sodium azide and 50% glycerol. Store at +4°C short term. Store at -20°C long term. Avoid freeze / thaw cycle.

## Protein Information

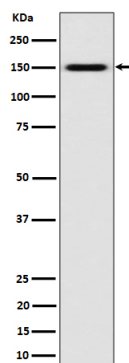
---

<b>Name</b>	SLC12A1
<b>Synonyms</b>	NKCC2 {ECO:0000303   PubMed:8640224}
<b>Function</b>	Renal sodium, potassium and chloride ion cotransporter that mediates the transepithelial NaCl reabsorption in the thick ascending limb and plays an essential role in the urinary concentration and volume regulation (PubMed: <a href="#">21321328</a> ). Electrically silent transporter system (By similarity).
<b>Cellular Location</b>	Apical cell membrane; Multi-pass membrane protein
<b>Tissue Location</b>	Kidney; localizes to the thick ascending limbs (at protein level).

## Images

---

Western blot analysis of SLC12A1 / NKCC2 expression in K562 cell lysate.



Please note: All products are 'FOR RESEARCH USE ONLY. NOT FOR USE IN DIAGNOSTIC OR THERAPEUTIC PROCEDURES'.