

# TSFM Antibody

Rabbit mAb

Catalog # AP92948

## Product Information

<b>Application</b>	WB, IF, ICC, IP
<b>Primary Accession</b>	<a href="#">P43897</a>
<b>Reactivity</b>	Rat, Human, Mouse
<b>Clonality</b>	Monoclonal
<b>Other Names</b>	COXPD3; EFTS; EFTSMT; TSFM; TSMT;
<b>Isotype</b>	Rabbit IgG
<b>Host</b>	Rabbit
<b>Calculated MW</b>	35391

## Additional Information

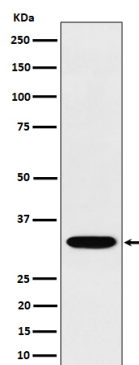
<b>Dilution</b>	WB 1:500~1:2000 ICC/IF 1:50~1:200 IP 1:50
<b>Purification</b>	Affinity-chromatography
<b>Immunogen</b>	A synthesized peptide derived from human TSFM
<b>Description</b>	Associates with the EF-Tu.GDP complex and induces the exchange of GDP to GTP. It remains bound to the aminoacyl-tRNA.EF-Tu.GTP complex up to the GTP hydrolysis stage on the ribosome.
<b>Storage Condition and Buffer</b>	Rabbit IgG in phosphate buffered saline , pH 7.4, 150mM NaCl, 0.02% sodium azide and 50% glycerol. Store at +4°C short term. Store at -20°C long term. Avoid freeze / thaw cycle.

## Protein Information

<b>Name</b>	TSFM {ECO:0000255 HAMAP-Rule:MF_03135}
<b>Function</b>	Associates with the EF-Tu.GDP complex and induces the exchange of GDP to GTP. It remains bound to the aminoacyl-tRNA.EF- Tu.GTP complex up to the GTP hydrolysis stage on the ribosome.
<b>Cellular Location</b>	Mitochondrion.
<b>Tissue Location</b>	Expressed in all tissues, with the highest levels of expression in skeletal muscle, liver and kidney

## Images

Western blot analysis of TSFM expression in Jurkat cell lysate.



Please note: All products are 'FOR RESEARCH USE ONLY. NOT FOR USE IN DIAGNOSTIC OR THERAPEUTIC PROCEDURES'.