

MYO19 Antibody

Rabbit mAb

Catalog # AP92949

Product Information

Application	WB, IF, ICC
Primary Accession	Q96H55
Reactivity	Human
Clonality	Monoclonal
Other Names	myo19; Myohd1; myosin XIX;
Isotype	Rabbit IgG
Host	Rabbit
Calculated MW	109135

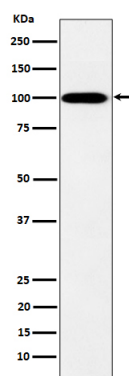
Additional Information

Dilution	WB 1:500~1:2000 ICC/IF 1:50~1:200
Purification	Affinity-chromatography
Immunogen	A synthesized peptide derived from human MYO19
Description	Myosins are actin-based motor molecules with ATPase activity. Unconventional myosins serve in intracellular movements. Their highly divergent tails are presumed to bind to membranous compartments, which would be moved relative to actin filaments. MYO19 is involved in mitochondrial motility.
Storage Condition and Buffer	Rabbit IgG in phosphate buffered saline , pH 7.4, 150mM NaCl, 0.02% sodium azide and 50% glycerol. Store at +4°C short term. Store at -20°C long term. Avoid freeze / thaw cycle.

Protein Information

Name	MYO19 {ECO:0000303 PubMed:19932026, ECO:0000312 HGNC:HGNC:26234}
Function	Actin-based motor molecule with ATPase activity that localizes to the mitochondrion outer membrane (PubMed: 19932026 , PubMed: 23568824 , PubMed: 25447992). Motor protein that moves towards the plus-end of actin filaments (By similarity). Required for mitochondrial inheritance during mitosis (PubMed: 25447992). May be involved in mitochondrial transport or positioning (PubMed: 23568824).
Cellular Location	Mitochondrion outer membrane; Peripheral membrane protein. Cytoplasm, cytoskeleton
Tissue Location	Widely expressed in multiple tissues and cell lines.

Images



Western blot analysis of MYO19 expression in K562 cell lysate.

Please note: All products are 'FOR RESEARCH USE ONLY. NOT FOR USE IN DIAGNOSTIC OR THERAPEUTIC PROCEDURES'.