

# WDR1 Antibody

Rabbit mAb

Catalog # AP92951

## Product Information

<b>Application</b>	WB, IHC, IF, ICC, IHF
<b>Primary Accession</b>	<a href="#">O75083</a>
<b>Reactivity</b>	Human
<b>Clonality</b>	Monoclonal
<b>Other Names</b>	AIP1; NORI 1; wdr1;
<b>Isotype</b>	Rabbit IgG
<b>Host</b>	Rabbit
<b>Calculated MW</b>	66194

## Additional Information

<b>Dilution</b>	WB 1:500~1:2000 IHC 1:50~1:200 ICC/IF 1:50~1:200
<b>Purification</b>	Affinity-chromatography
<b>Immunogen</b>	A synthesized peptide derived from human WDR1
<b>Description</b>	Induces disassembly of actin filaments in conjunction with ADF/cofilin family proteins (PubMed:15629458). Enhances cofilin-mediated actin severing (By similarity).
<b>Storage Condition and Buffer</b>	Rabbit IgG in phosphate buffered saline , pH 7.4, 150mM NaCl, 0.02% sodium azide and 50% glycerol. Store at +4°C short term. Store at -20°C long term. Avoid freeze / thaw cycle.

## Protein Information

<b>Name</b>	WDR1
<b>Function</b>	Induces disassembly of actin filaments in conjunction with ADF/cofilin family proteins (PubMed: <a href="#">15629458</a> , PubMed: <a href="#">27557945</a> , PubMed: <a href="#">29751004</a> ). Enhances cofilin-mediated actin severing (By similarity). Involved in cytokinesis. Involved in chemotactic cell migration by restricting lamellipodial membrane protrusions (PubMed: <a href="#">18494608</a> ). Involved in myocardium sarcomere organization. Required for cardiomyocyte growth and maintenance (By similarity). Involved in megakaryocyte maturation and platelet shedding. Required for the establishment of planar cell polarity (PCP) during follicular epithelium development and for cell shape changes during PCP; the function seems to implicate cooperation with CFL1 and/or DSTN/ADF. Involved in the generation/maintenance of cortical tension (By similarity). Involved in assembly and maintenance of epithelial apical cell junctions and plays a role in the organization of the perijunctional actomyosin belt (PubMed: <a href="#">25792565</a> ).
<b>Cellular Location</b>	Cytoplasm. Cytoplasm, cytoskeleton {ECO:0000250 UniProtKB:Q5RKI0}. Cell

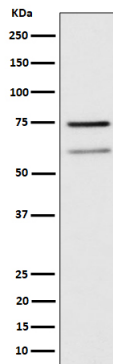
projection, podosome. Cell junction

## Tissue Location

Expressed in peripheral blood mononuclear cells (at protein level).

## Images

---



Western blot analysis of WDR1 expression in Raji cell lysate.

Please note: All products are 'FOR RESEARCH USE ONLY. NOT FOR USE IN DIAGNOSTIC OR THERAPEUTIC PROCEDURES'.