

# Pyrophosphatase 1 Antibody

Rabbit mAb

Catalog # AP92958

## Product Information

---

<b>Application</b>	WB, IP
<b>Primary Accession</b>	<a href="#">Q15181</a>
<b>Reactivity</b>	Rat, Human, Mouse
<b>Clonality</b>	Monoclonal
<b>Other Names</b>	inorganic pyrophosphatase 1; IOPPP; PP1; PPA1; PPase;Pyp;
<b>Isotype</b>	Rabbit IgG
<b>Host</b>	Rabbit
<b>Calculated MW</b>	32660

## Additional Information

---

<b>Dilution</b>	WB 1:500~1:2000 IP 1:50
<b>Purification</b>	Affinity-chromatography
<b>Immunogen</b>	A synthesized peptide derived from human Pyrophosphatase 1
<b>Description</b>	Belongs to the PPase family.
<b>Storage Condition and Buffer</b>	Rabbit IgG in phosphate buffered saline , pH 7.4, 150mM NaCl, 0.02% sodium azide and 50% glycerol. Store at +4°C short term. Store at -20°C long term. Avoid freeze / thaw cycle.

## Protein Information

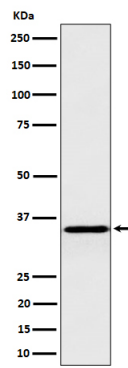
---

<b>Name</b>	PPA1
<b>Synonyms</b>	IOPPP, PP
<b>Cellular Location</b>	Cytoplasm.
<b>Tissue Location</b>	Expressed ubiquitously.

## Images

---

Western blot analysis of Pyrophosphatase 1 expression in HepG2 cell lysate.



Please note: All products are 'FOR RESEARCH USE ONLY. NOT FOR USE IN DIAGNOSTIC OR THERAPEUTIC PROCEDURES'.