

ACAT1 Antibody

Rabbit mAb

Catalog # AP92959

Product Information

Application	WB, IHC, IP
Primary Accession	P24752
Reactivity	Rat, Human, Mouse
Clonality	Monoclonal
Other Names	ACAT; acat1; MAT; RATAAL; THIL;
Isotype	Rabbit IgG
Host	Rabbit
Calculated MW	45200

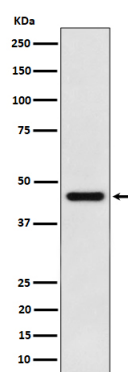
Additional Information

Dilution	WB 1:500~1:2000 IHC 1:50~1:200 IP 1:50
Purification	Affinity-chromatography
Immunogen	A synthesized peptide derived from human ACAT1
Description	Plays a major role in ketone body metabolism.
Storage Condition and Buffer	Rabbit IgG in phosphate buffered saline , pH 7.4, 150mM NaCl, 0.02% sodium azide and 50% glycerol. Store at +4°C short term. Store at -20°C long term. Avoid freeze / thaw cycle.

Protein Information

Name	ACAT1
Synonyms	ACAT, MAT
Function	<p>This is one of the enzymes that catalyzes the last step of the mitochondrial beta-oxidation pathway, an aerobic process breaking down fatty acids into acetyl-CoA (PubMed:1715688, PubMed:7728148, PubMed:9744475). Using free coenzyme A/CoA, catalyzes the thiolytic cleavage of medium- to long-chain 3-oxoacyl-CoAs into acetyl-CoA and a fatty acyl-CoA shortened by two carbon atoms (PubMed:1715688, PubMed:7728148, PubMed:9744475). The activity of the enzyme is reversible and it can also catalyze the condensation of two acetyl-CoA molecules into acetoacetyl-CoA (PubMed:17371050). Thereby, it plays a major role in ketone body metabolism (PubMed:1715688, PubMed:17371050, PubMed:7728148, PubMed:9744475).</p>
Cellular Location	Mitochondrion.

Images



Western blot analysis of ACAT1 expression in HepG2 cell lysate.

Please note: All products are 'FOR RESEARCH USE ONLY. NOT FOR USE IN DIAGNOSTIC OR THERAPEUTIC PROCEDURES'.