

# RPL10A Antibody

Rabbit mAb

Catalog # AP92960

## Product Information

---

<b>Application</b>	WB, IHC, IF, FC, ICC, IHF
<b>Primary Accession</b>	<a href="#">P62906</a>
<b>Reactivity</b>	Rat, Human, Mouse
<b>Clonality</b>	Monoclonal
<b>Other Names</b>	CSA19; L10A; NEDD6; rpl10a;
<b>Isotype</b>	Rabbit IgG
<b>Host</b>	Rabbit
<b>Calculated MW</b>	24831

## Additional Information

---

<b>Dilution</b>	WB 1:500~1:2000 IHC 1:50~1:200 ICC/IF 1:50~1:200 FC 1:50
<b>Purification</b>	Affinity-chromatography
<b>Immunogen</b>	A synthesized peptide derived from human RPL10A
<b>Description</b>	Component of the large ribosomal subunit.
<b>Storage Condition and Buffer</b>	Rabbit IgG in phosphate buffered saline , pH 7.4, 150mM NaCl, 0.02% sodium azide and 50% glycerol. Store at +4°C short term. Store at -20°C long term. Avoid freeze / thaw cycle.

## Protein Information

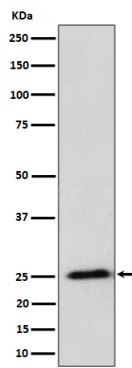
---

<b>Name</b>	RPL10A
<b>Synonyms</b>	NEDD6
<b>Function</b>	Component of the large ribosomal subunit (PubMed: <a href="#">12962325</a> , PubMed: <a href="#">23636399</a> , PubMed: <a href="#">32669547</a> ). The ribosome is a large ribonucleoprotein complex responsible for the synthesis of proteins in the cell (PubMed: <a href="#">12962325</a> , PubMed: <a href="#">23636399</a> , PubMed: <a href="#">32669547</a> ).
<b>Cellular Location</b>	Cytoplasm.

## Images

---

Western blot analysis of RPL10A expression in HeLa cell lysate.



Please note: All products are 'FOR RESEARCH USE ONLY. NOT FOR USE IN DIAGNOSTIC OR THERAPEUTIC PROCEDURES'.