

# Nup107 Antibody

Rabbit mAb

Catalog # AP92972

## Product Information

---

Application	WB
Primary Accession	<a href="#">P57740</a>
Reactivity	Human
Clonality	Monoclonal
Other Names	NUP107; NUP84;
Isotype	Rabbit IgG
Host	Rabbit
Calculated MW	106374

## Additional Information

---

Dilution	WB 1:500~1:2000
Purification	Affinity-chromatography
Immunogen	A synthesized peptide derived from human Nup107
Description	Plays a role in the nuclear pore complex (NPC) assembly and/or maintenance. Required for the assembly of peripheral proteins into the NPC. May anchor NUP62 to the NPC.
Storage Condition and Buffer	Rabbit IgG in phosphate buffered saline , pH 7.4, 150mM NaCl, 0.02% sodium azide and 50% glycerol. Store at +4°C short term. Store at -20°C long term. Avoid freeze / thaw cycle.

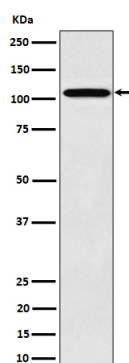
## Protein Information

---

Name	NUP107
Function	Plays a role in the nuclear pore complex (NPC) assembly and/or maintenance (PubMed: <a href="#">12552102</a> , PubMed: <a href="#">15229283</a> , PubMed: <a href="#">30179222</a> ). Required for the assembly of peripheral proteins into the NPC (PubMed: <a href="#">12552102</a> , PubMed: <a href="#">15229283</a> ). May anchor NUP62 to the NPC (PubMed: <a href="#">15229283</a> ). Involved in nephrogenesis (PubMed: <a href="#">30179222</a> ).
Cellular Location	Nucleus membrane. Nucleus, nuclear pore complex. Chromosome, centromere, kinetochore. Note=Located on both the cytoplasmic and nuclear sides of the NPC core structure (PubMed:11564755). During mitosis, localizes to the kinetochores (PubMed:11564755). Dissociates from the disassembled NPC structure late during prophase of mitosis (PubMed:11564755)
Tissue Location	Ubiquitously expressed in fetal and adult tissues.

## Images

---



Western blot analysis of Nup107 expression in 293 cell lysate.

Please note: All products are 'FOR RESEARCH USE ONLY. NOT FOR USE IN DIAGNOSTIC OR THERAPEUTIC PROCEDURES'.