

# PCTAIRE1 Antibody

Rabbit mAb

Catalog # AP92974

## Product Information

<b>Application</b>	WB
<b>Primary Accession</b>	<a href="#">Q00536</a>
<b>Reactivity</b>	Rat, Human, Mouse
<b>Clonality</b>	Monoclonal
<b>Other Names</b>	Cdk16; PCTAIRE; PCTAIRE1; PCTGAIRE; PCTK1;
<b>Isotype</b>	Rabbit IgG
<b>Host</b>	Rabbit
<b>Calculated MW</b>	55716

## Additional Information

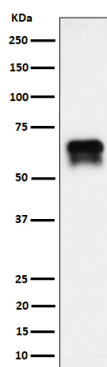
<b>Dilution</b>	WB 1:500~1:2000
<b>Purification</b>	Affinity-chromatography
<b>Immunogen</b>	A synthesized peptide derived from human PCTAIRE1
<b>Description</b>	May play a role in signal transduction cascades in terminally differentiated cells.
<b>Storage Condition and Buffer</b>	Rabbit IgG in phosphate buffered saline , pH 7.4, 150mM NaCl, 0.02% sodium azide and 50% glycerol. Store at +4°C short term. Store at -20°C long term. Avoid freeze / thaw cycle.

## Protein Information

<b>Name</b>	CDK16
<b>Synonyms</b>	PCTAIRE1, PCTK1
<b>Function</b>	Protein kinase that plays a role in vesicle-mediated transport processes and exocytosis. Regulates GH1 release by brain neurons. Phosphorylates NSF, and thereby regulates NSF oligomerization. Required for normal spermatogenesis. Regulates neuron differentiation and dendrite development (By similarity). Plays a role in the regulation of insulin secretion in response to changes in blood glucose levels. Can phosphorylate CCNY at 'Ser-336' (in vitro).
<b>Cellular Location</b>	Cytoplasm. Cytoplasmic vesicle, secretory vesicle {ECO:0000250 UniProtKB:Q63686} Cell membrane; Peripheral membrane protein; Cytoplasmic side. Synapse, synaptosome {ECO:0000250 UniProtKB:Q63686}. Note=Colocalizes with insulin in pancreas islets. Recruited to the cell membrane by CCNY
<b>Tissue Location</b>	Detected in pancreas islets (at protein level). Detected in brain and pancreas.

## Images

---



Western blot analysis of PCTAIRE1 expression in BxPC-3 cell lysate.

Please note: All products are 'FOR RESEARCH USE ONLY. NOT FOR USE IN DIAGNOSTIC OR THERAPEUTIC PROCEDURES'.