

Mras Antibody

Rabbit mAb

Catalog # AP92976

Product Information

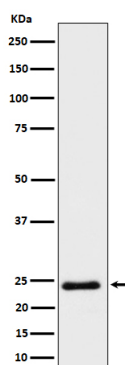
Application	WB
Primary Accession	O14807
Reactivity	Rat, Human, Mouse
Clonality	Monoclonal
Other Names	Mras; R ras3; Ras related protein MRas; Ras related protein RRas3; RRas3; Xras;
Isotype	Rabbit IgG
Host	Rabbit
Calculated MW	24 KDa

Additional Information

Dilution	WB 1:500~1:2000
Purification	Affinity-chromatography
Immunogen	A synthesized peptide derived from human Mras
Description	May serve as an important signal transducer for a novel upstream stimuli in controlling cell proliferation. Weakly activates the MAP kinase pathway.
Storage Condition and Buffer	Rabbit IgG in phosphate buffered saline , pH 7.4, 150mM NaCl, 0.02% sodium azide and 50% glycerol. Store at +4°C short term. Store at -20°C long term. Avoid freeze / thaw cycle.

Protein Information

Images



Western blot analysis of Mras expression in HeLa cell lysate.

Please note: All products are 'FOR RESEARCH USE ONLY. NOT FOR USE IN DIAGNOSTIC OR THERAPEUTIC PROCEDURES'.