

# FPGS Antibody

Rabbit mAb

Catalog # AP92994

## Product Information

---

<b>Application</b>	WB
<b>Primary Accession</b>	<a href="#">Q05932</a>
<b>Reactivity</b>	Rat, Human, Mouse
<b>Clonality</b>	Monoclonal
<b>Other Names</b>	FOLC; Folylpoly gamma glutamate synthetase; FPGS; Tetrahydrofolate synthase;
<b>Isotype</b>	Rabbit IgG
<b>Host</b>	Rabbit
<b>Calculated MW</b>	64609

## Additional Information

---

<b>Dilution</b>	WB 1:500~1:2000
<b>Purification</b>	Affinity-chromatography
<b>Immunogen</b>	A synthesized peptide derived from human FPGS
<b>Description</b>	Conversion of folates to polyglutamate derivatives. This allows tissues to concentrate folate at higher levels than in plasma.
<b>Storage Condition and Buffer</b>	Rabbit IgG in phosphate buffered saline , pH 7.4, 150mM NaCl, 0.02% sodium azide and 50% glycerol. Store at +4°C short term. Store at -20°C long term. Avoid freeze / thaw cycle.

## Protein Information

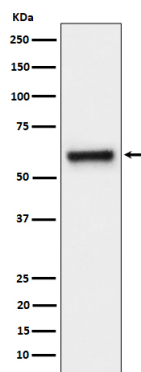
---

<b>Name</b>	FPGS
<b>Function</b>	Catalyzes conversion of folates to polyglutamate derivatives allowing concentration of folate compounds in the cell and the intracellular retention of these cofactors, which are important substrates for most of the folate-dependent enzymes that are involved in one-carbon transfer reactions involved in purine, pyrimidine and amino acid synthesis. Unsubstituted reduced folates are the preferred substrates. Metabolizes methotrexate (MTX) to polyglutamates.
<b>Cellular Location</b>	[Isoform 1]: Mitochondrion inner membrane. Mitochondrion matrix

## Images

---

Western blot analysis of FPGS expression in HeLa cell lysate.



Please note: All products are 'FOR RESEARCH USE ONLY. NOT FOR USE IN DIAGNOSTIC OR THERAPEUTIC PROCEDURES'.