

IFT88 Antibody

Rabbit mAb

Catalog # AP92996

Product Information

Application	WB
Primary Accession	Q13099
Reactivity	Rat, Human, Mouse
Clonality	Monoclonal
Other Names	DAF19; hTg737; Ift88; TG737; TTC10;
Isotype	Rabbit IgG
Host	Rabbit
Calculated MW	93192

Additional Information

Dilution	WB 1:500~1:2000
Purification	Affinity-chromatography
Immunogen	A synthesized peptide derived from human IFT88
Description	Involved in primary cilium biogenesis.
Storage Condition and Buffer	Rabbit IgG in phosphate buffered saline , pH 7.4, 150mM NaCl, 0.02% sodium azide and 50% glycerol. Store at +4°C short term. Store at -20°C long term. Avoid freeze / thaw cycle.

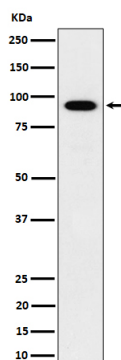
Protein Information

Name	IFT88
Synonyms	TG737, TTC10
Function	Positively regulates primary cilium biogenesis (PubMed: 17604723). Also involved in autophagy since it is required for trafficking of ATG16L and the expansion of the autophagic compartment.
Cellular Location	Cytoplasm, cytoskeleton, microtubule organizing center, centrosome, centriole {ECO:0000250 UniProtKB:Q61371}. Cell projection, cilium. Cytoplasm, cytoskeleton, cilium basal body. Cytoplasm, cytoskeleton, microtubule organizing center, centrosome. Cytoplasm {ECO:0000250 UniProtKB:Q61371}. Cell projection, cilium, flagellum {ECO:0000250 UniProtKB:Q61371}. Cytoplasm, cytoskeleton {ECO:0000250 UniProtKB:Q61371}. Note=Colocalizes with ENTR1 and gamma- tubulin at the basal body of primary cilia (PubMed:27767179) Colocalizes with ENTR1 and pericentrin at the centrosome (PubMed:27767179). In sperm cells, localizes to the manchette, head- tail coupling apparatus and flagellum (By similarity) {ECO:0000250 UniProtKB:Q61371, ECO:0000269 PubMed:27767179}

Tissue Location

Expressed in the heart, brain, liver, lung, kidney, skeletal muscle and pancreas.

Images



Western blot analysis of IFT88 expression in HepG2 cell lysate.

Please note: All products are 'FOR RESEARCH USE ONLY. NOT FOR USE IN DIAGNOSTIC OR THERAPEUTIC PROCEDURES'.