

RAB8A Antibody

Rabbit mAb

Catalog # AP92998

Product Information

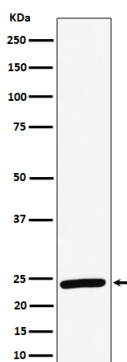
Application	WB, IHC, IF, FC, ICC, IHF
Primary Accession	P61006
Reactivity	Rat, Human, Mouse
Clonality	Monoclonal
Other Names	MEL; Mel transforming oncogene; Oncogene c mel; RAB8; RAB8A;
Isotype	Rabbit IgG
Host	Rabbit
Calculated MW	24 KDa

Additional Information

Dilution	WB 1:500~1:2000 IHC 1:50~1:200 ICC/IF 1:50~1:200 FC 1:50
Purification	Affinity-chromatography
Immunogen	A synthesized peptide derived from human RAB8A
Description	May be involved in vesicular trafficking and neurotransmitter release. Together with RAB11A, RAB3IP, the exocyst complex, PARD3, PRKCI, ANXA2, CDC42 and DNMBP promotes transcytosis of PODXL to the apical membrane initiation sites (AMIS), apical surface formation and lumenogenesis. Together with MYO5B and RAB11A participates in epithelial cell polarization.
Storage Condition and Buffer	Rabbit IgG in phosphate buffered saline , pH 7.4, 150mM NaCl, 0.02% sodium azide and 50% glycerol. Store at +4°C short term. Store at -20°C long term. Avoid freeze / thaw cycle.

Protein Information

Images



Western blot analysis of RAB8A expression in HeLa cell lysate.

Please note: All products are 'FOR RESEARCH USE ONLY. NOT FOR USE IN DIAGNOSTIC OR THERAPEUTIC PROCEDURES'.