

PRPF31 Antibody

Rabbit mAb

Catalog # AP93001

Product Information

Application	WB, IF, FC, ICC
Primary Accession	Q8WWY3
Reactivity	Human
Clonality	Monoclonal
Other Names	hPrp31; Protein 61K; PRP31; prpf31; RP11; SNRNP61;
Isotype	Rabbit IgG
Host	Rabbit
Calculated MW	55456

Additional Information

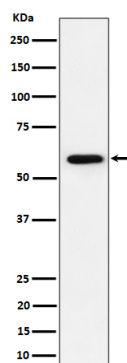
Dilution	WB 1:500~1:2000 ICC/IF 1:50~1:200 FC 1:50
Purification	Affinity-chromatography
Immunogen	A synthesized peptide derived from human PRPF31
Description	Involved in pre-mRNA splicing. Required for U4/U6.U5 tri-snRNP formation.
Storage Condition and Buffer	Rabbit IgG in phosphate buffered saline , pH 7.4, 150mM NaCl, 0.02% sodium azide and 50% glycerol. Store at +4°C short term. Store at -20°C long term. Avoid freeze / thaw cycle.

Protein Information

Name	PRPF31 (HGNC:15446)
Synonyms	PRP31
Function	Involved in pre-mRNA splicing as component of the spliceosome (PubMed: 11867543 , PubMed: 20118938 , PubMed: 28781166). Required for the assembly of the U4/U5/U6 tri-snRNP complex, one of the building blocks of the spliceosome (PubMed: 11867543).
Cellular Location	Nucleus. Nucleus speckle. Nucleus, Cajal body. Note=Predominantly found in speckles and in Cajal bodies.
Tissue Location	Ubiquitously expressed.

Images

Western blot analysis of PRPF31 expression in Jurkat cell lysate.



Please note: All products are 'FOR RESEARCH USE ONLY. NOT FOR USE IN DIAGNOSTIC OR THERAPEUTIC PROCEDURES'.