

PTPRR Antibody

Rabbit mAb

Catalog # AP93003

Product Information

Application	WB, IHC
Primary Accession	Q15256
Reactivity	Rat, Human, Mouse
Clonality	Monoclonal
Other Names	ECPTP; NC PTPCOM1; PTPBR7; PTPRQ; PTPRR; PTPSL; Receptor type tyrosine protein phosphatase R;
Isotype	Rabbit IgG
Host	Rabbit
Calculated MW	73834

Additional Information

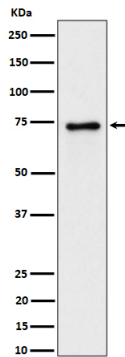
Dilution	WB 1:500~1:2000 IHC 1:50~1:200
Purification	Affinity-chromatography
Immunogen	A synthesized peptide derived from human PTPRR
Description	Sequesters mitogen-activated protein kinases (MAPKs) such as MAPK1, MAPK3 and MAPK14 in the cytoplasm in an inactive form. The MAPKs bind to a dephosphorylated kinase interacting motif, phosphorylation of which by the protein kinase A complex releases the MAPKs for activation and translocation into the nucleus.
Storage Condition and Buffer	Rabbit IgG in phosphate buffered saline , pH 7.4, 150mM NaCl, 0.02% sodium azide and 50% glycerol. Store at +4°C short term. Store at -20°C long term. Avoid freeze / thaw cycle.

Protein Information

Name	PTPRR
Synonyms	ECPTP, PTPRQ
Function	Sequesters mitogen-activated protein kinases (MAPKs) such as MAPK1, MAPK3 and MAPK14 in the cytoplasm in an inactive form. The MAPKs bind to a dephosphorylated kinase interacting motif, phosphorylation of which by the protein kinase A complex releases the MAPKs for activation and translocation into the nucleus (By similarity).
Cellular Location	Secreted. [Isoform Delta]: Cytoplasm, perinuclear region. Note=Locates to the perinuclear areas within the cytoplasm
Tissue Location	Detected in cerebrospinal fluid (at protein level) (PubMed:25326458). Expressed in brain, placenta, small intestine, stomach, uterus and weakly in

the prostate. Isoform alpha has been observed only in the brain. Isoform gamma is expressed in brain, placenta and uterus. Isoform delta is expressed in brain, kidney, placenta, prostate, small intestine and uterus

Images



Western blot analysis of PTPRR expression in mouse brain lysate.

Please note: All products are 'FOR RESEARCH USE ONLY. NOT FOR USE IN DIAGNOSTIC OR THERAPEUTIC PROCEDURES'.