

# NSDHL Antibody

Rabbit mAb

Catalog # AP93005

## Product Information

<b>Application</b>	WB, IHC, IF, ICC, IHF
<b>Primary Accession</b>	<a href="#">Q15738</a>
<b>Reactivity</b>	Human
<b>Clonality</b>	Monoclonal
<b>Other Names</b>	H105E3; NSDHL; SDR31E1; XAP104;
<b>Isotype</b>	Rabbit IgG
<b>Host</b>	Rabbit
<b>Calculated MW</b>	41900

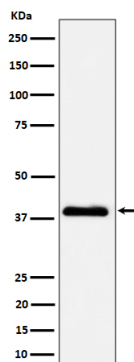
## Additional Information

<b>Dilution</b>	WB 1:500~1:2000 IHC 1:50~1:200 ICC/IF 1:50~1:200
<b>Purification</b>	Affinity-chromatography
<b>Immunogen</b>	A synthesized peptide derived from human NSDHL
<b>Description</b>	Catalyzes the NAD(P) <sup>+</sup> -dependent oxidative decarboxylation of the C4 methyl groups of 4- $\alpha$ -carboxysterols in post-squalene cholesterol biosynthesis (By similarity).
<b>Storage Condition and Buffer</b>	Rabbit IgG in phosphate buffered saline , pH 7.4, 150mM NaCl, 0.02% sodium azide and 50% glycerol. Store at +4°C short term. Store at -20°C long term. Avoid freeze / thaw cycle.

## Protein Information

<b>Name</b>	NSDHL
<b>Synonyms</b>	H105E3
<b>Function</b>	Catalyzes the NAD(P) <sup>(+)</sup> -dependent oxidative decarboxylation of the C4 methyl groups of 4- $\alpha$ -carboxysterols in post-squalene cholesterol biosynthesis (By similarity). Also plays a role in the regulation of the endocytic trafficking of EGFR (By similarity).
<b>Cellular Location</b>	Endoplasmic reticulum membrane; Single-pass membrane protein. Lipid droplet {ECO:0000250 UniProtKB:Q9R1J0} Note=Trafficking through the Golgi is necessary for ER membrane localization. {ECO:0000250 UniProtKB:Q9R1J0}
<b>Tissue Location</b>	Brain, heart, liver, lung, kidney, skin and placenta

## Images



Western blot analysis of NSDHL expression in A431 cell lysate.

Please note: All products are 'FOR RESEARCH USE ONLY. NOT FOR USE IN DIAGNOSTIC OR THERAPEUTIC PROCEDURES'.